

Southfield Gardens, TW1

£1,000,000

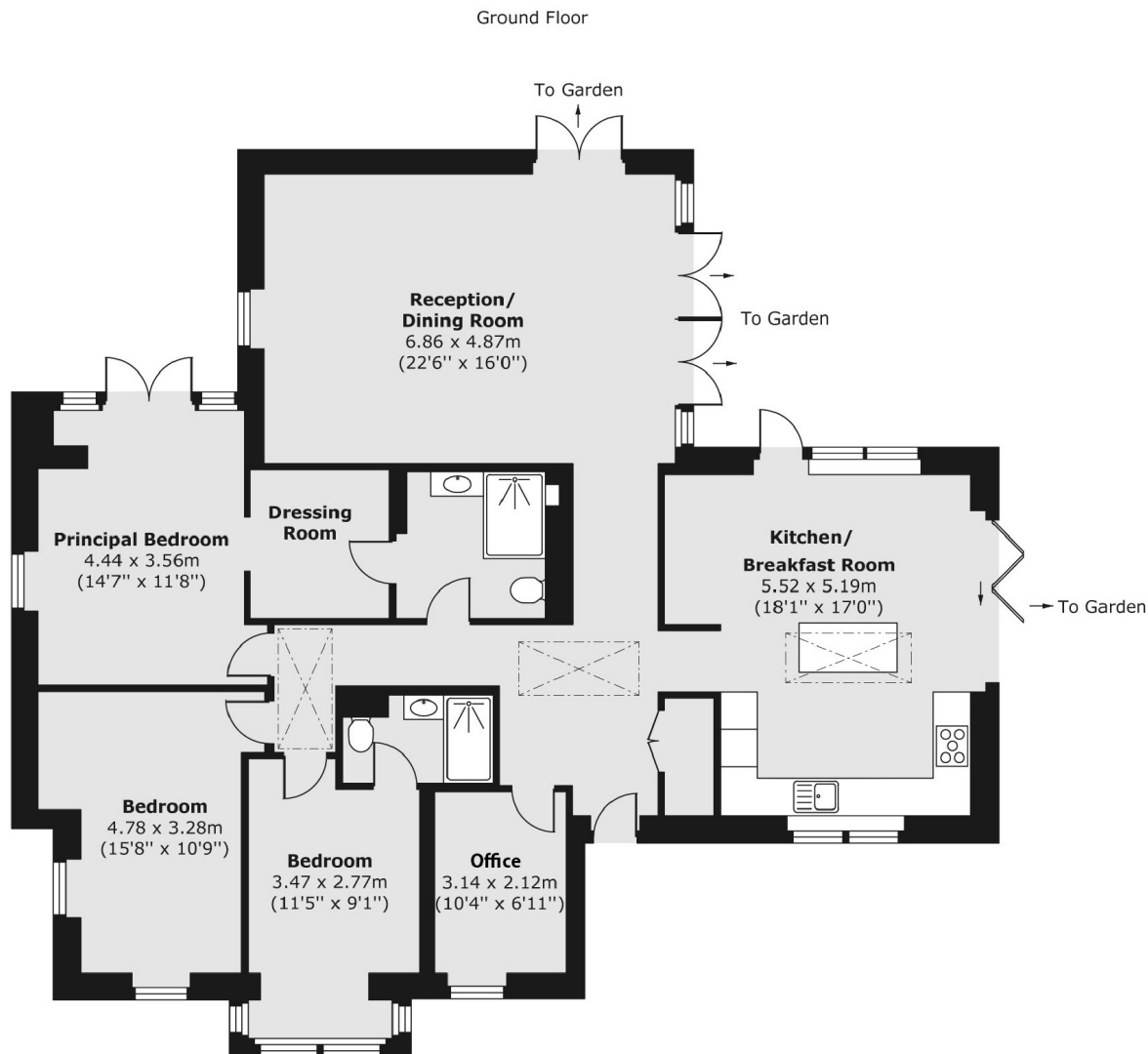
Offers over £1,000,000. A fantastic opportunity to purchase a brand new three bedroom detached bungalow with office occupying over 1500sq feet, benefitting from two shower rooms, generous off street parking to the front tucked behind electric gates, a wrap-around garden and an outstanding EPC rating A.

Southfield Gardens is a highly sought after road in Strawberry Hill and is just around the corner from Teddington high street where you will find a vast array of shops, pubs and restaurants. There are some fantastic schools nearby such as Newlands House, Stanley Primary and Teddington School.

Features

- Three Bedrooms & Office
- Detached
- Electric Gated Driveway
- No Onward Chain
- EPC Rating A
- Excellent Condition

Southfield Gardens, Strawberry Hill, TW1



Total area (approx.) 143.44 sq. m (1,544 sq. ft)