



**Udney Park Road, TW11**  
**£1,945,000**

**Dexters**





## Udney Park Road, TW11

This beautiful home is offered in excellent decorative order throughout and located in the heart of Teddington with over 2000 sq ft in living space.

From the moment you enter the house, original period features are immediately obvious including restored tiled flooring, original fireplaces, high ceilings with original coving and staircase bannisters. To the front, the formal reception room has a period fireplace and bespoke cupboards on either side. The ground floor has been designed to be sociable and is centred around family living. The kitchen/breakfast room has a modern kitchen with built in appliances and a large central island. There is formal dining space along with a second reception area with floor to ceiling bi-folding doors opening onto the garden. In addition there is a W/C. On the first floor the principal bedroom stretches across the width of the house, it is grand with high ceilings and full of natural light. There are also two double bedrooms and a family bathroom. All bedrooms have bespoke fitted wardrobes. There are two further double bedrooms along with a smart shower room to the top floor. There is a gorgeous garden with a patio and large lawn, in addition to this there is planning permission approved for a garage to the rear of the property.

Udney Park Road is a turning off Teddington High Street. Perfect for Transport links and school catchment. Teddington High Street offers local and well known retailers. The River Thames and Royal Bushy Park are close by.

### Features

- Five Bedrooms
- Two Bath/Shower Rooms
- Large Garden
- Potential To Add Garage
- Central Location
- Excellent School Catchment



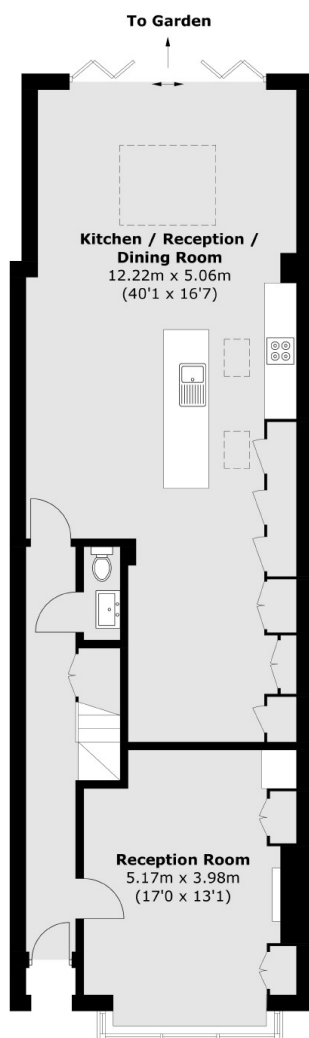




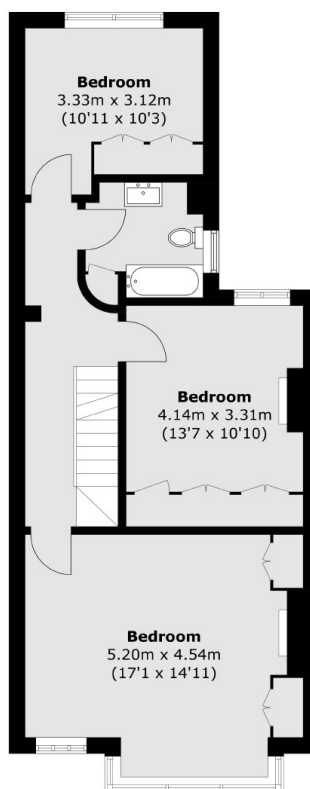




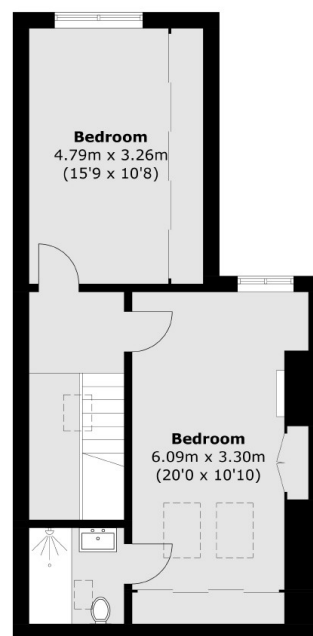
# Udney Park Road, Teddington, TW11



**Ground Floor**



**First Floor**



**Second Floor**

Total area (approx.): 194.8 sq. m (2,096.8 sq. ft)