



Hampton Road, TW11

£565,000

This stunning raised ground floor apartment is offered in excellent decorative order throughout. The property benefits from two double bedrooms and a stunning open plan reception room, parking and communal gardens.

Excellent for transport links and if driving there is easy access to the M3. Teddington High Street is easy to reach with shops and restaurants. Bushy Park and the river Thames are within walking distance.

Features

Excellent Decorative Order
Throughout
Close To Bushy Park
Two Double Bedrooms
Communal Gardens
Parking



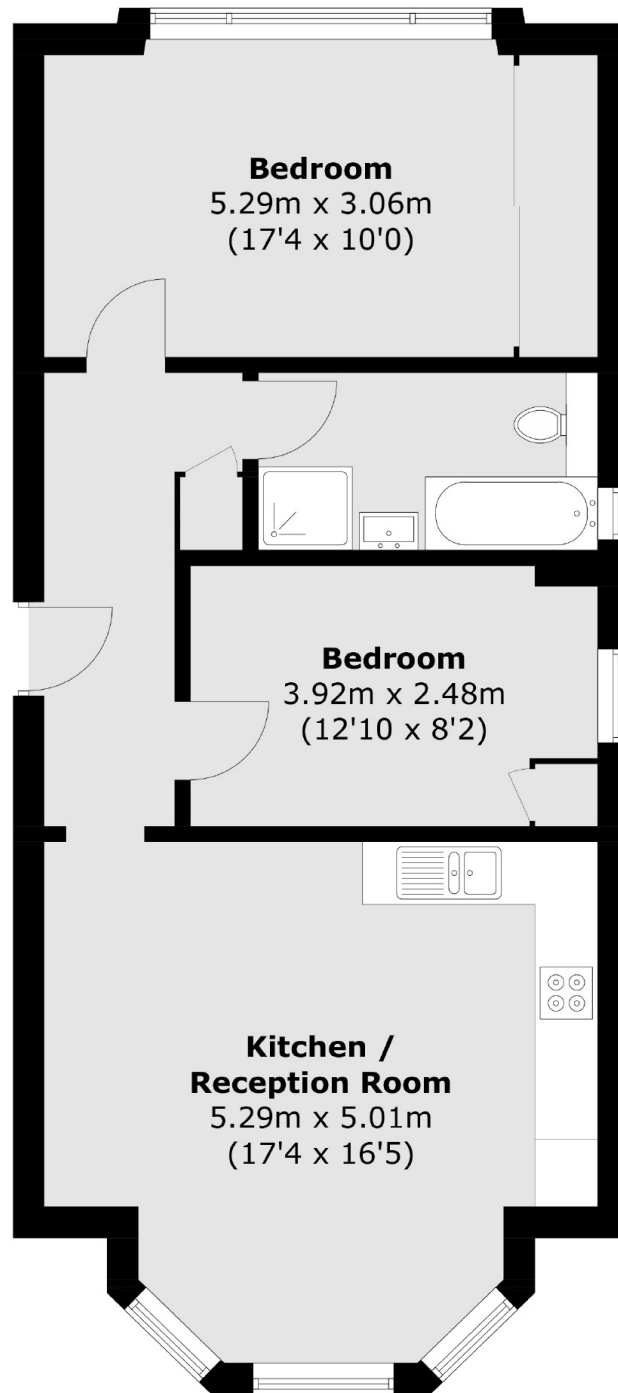
Hampton Road, TW11

Entering the flat you are instantly impressed by the bright and spacious reception room/kitchen with its high ceilings and a lovely bay window perfect for a table.

There are two double bedrooms. The master bedroom has views over the communal gardens and a bathroom with a shower and bath.



Hampton Road, Teddington, TW11



Total area (approx.): 63.8 sq. m (686.7 sq. ft)