



## Kingston Close, TW11

£2,395 Per calendar month

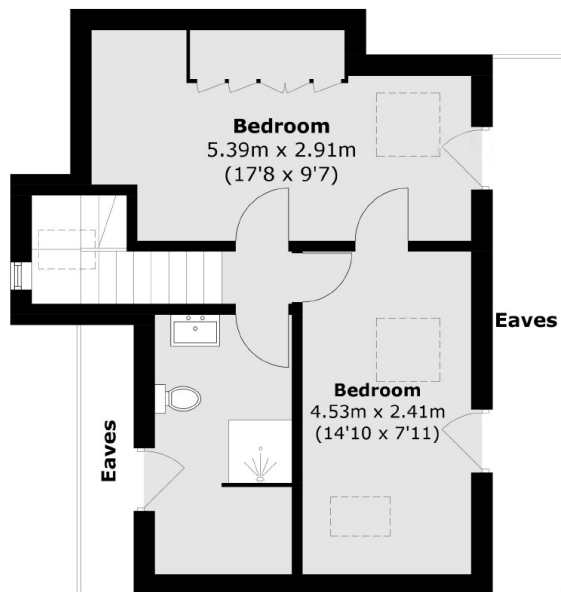
Set within a private close, with easy access to Teddington High Street, is this large three bedroom maisonette, that has two reception rooms, is modern throughout with two bathrooms and has a private garden and parking.

Kingston Close is just off Cromwell Road and within easy reach of Teddington high street and mainline station. Bushy Park, the River Thames and Kingston town centre are all close by.

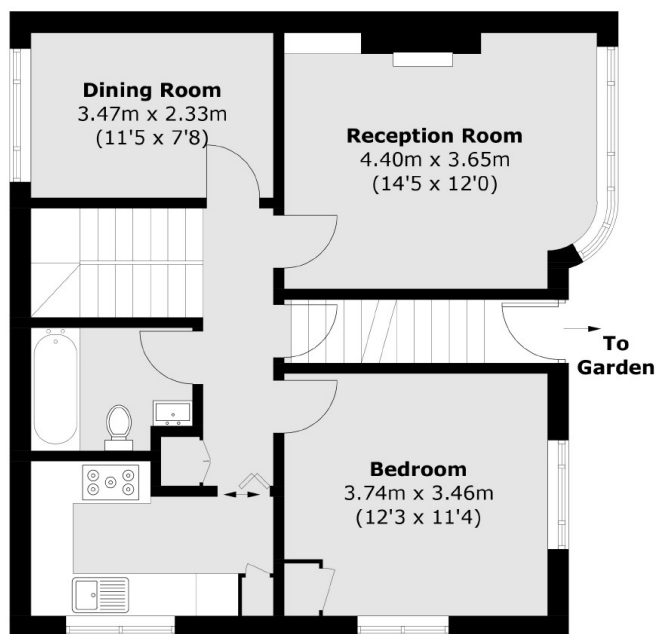
### Features

- Three Double Bedrooms
- Two Reception Rooms
- Separate Modern Kitchen
- Excellent Condition
- Private Garden
- Communal Gardens

# Kingston Close, Teddington, TW11



**Second Floor**



**First Floor**

Total area (approx.): 102.0 sq. m (1,097.9 sq. ft)  
(Excluding Eaves)