



Southcott Road, TW11

£495,000

This ground floor apartment is located in a popular development opposite Royal Bushy Park. This two double bedroom apartment is available with no onward chain and in immaculate condition.

Located off Southcott Road in Teddington with Bushy Park on your doorstep and a short walk to Kingston's shops, the property is excellently located for all amenities.

Features

- No Onward Chain
- Ground Floor
- Private Patio Area
- Two Double Bedrooms
- Two Bathrooms
- Allocated Parking



Southcott Road, TW11

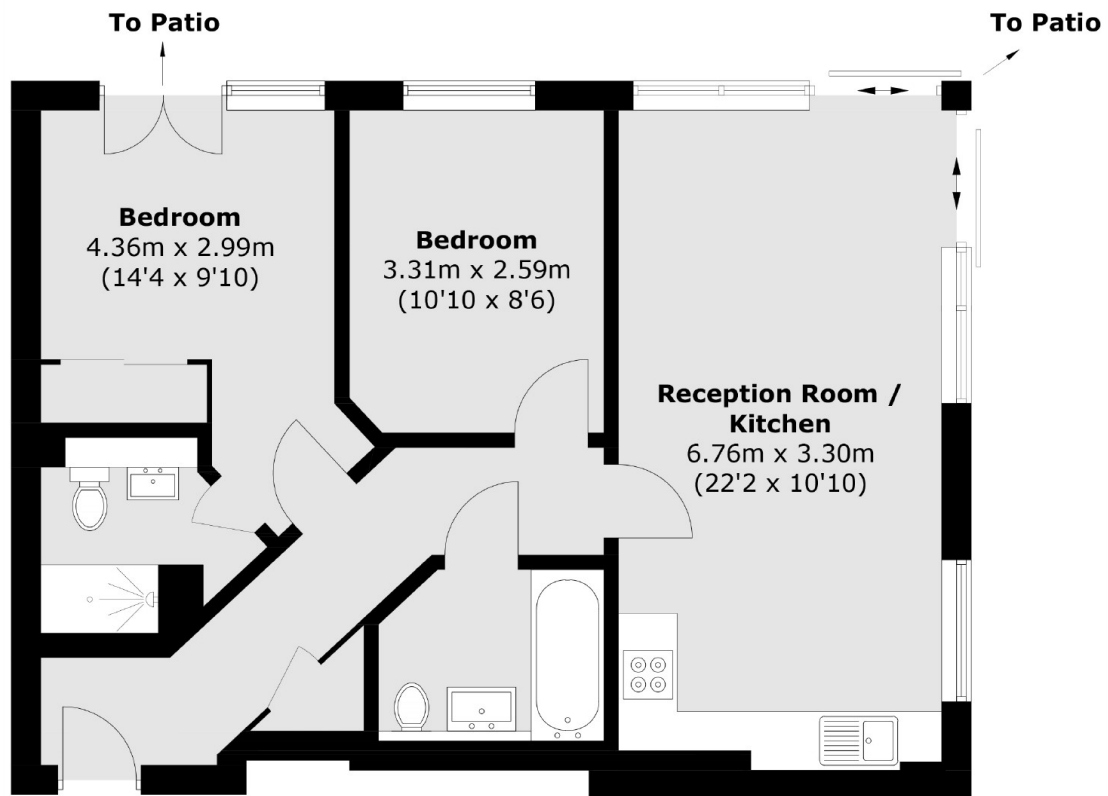
The 22ft reception room is open plan onto the modern kitchen creating a fantastic sociable living space. There is plenty of space to relax and dine. The modern kitchen has integrated appliances. There are sliding doors leading on to a private patio.

There are two generous double bedrooms, the master with an en suite shower room and fitted wardrobes. There is a family bathroom and additional storage in the hallway.

Within the development there is an allocated parking space.



Southcott Road, Teddington, TW11



Total area (approx.): 61.4 sq. m (660.9 sq. ft)