



Broom Close, TW11

£549,950

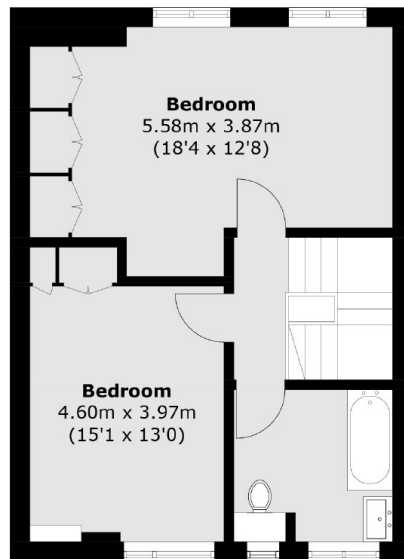
This stunning split level apartment is exceptionally bright and spacious. The property boasts two double bedrooms and well designed living space. With access to beautifully manicured communal river gardens and with the added benefit of a garage.

Broom Close is situated just off Broom Road. Close to the River Thames, local schools, Teddington mainline station and also close to Hampton Wick Station. Bushy Park is nearby along with Teddington High Street and Kingston Town Centre.

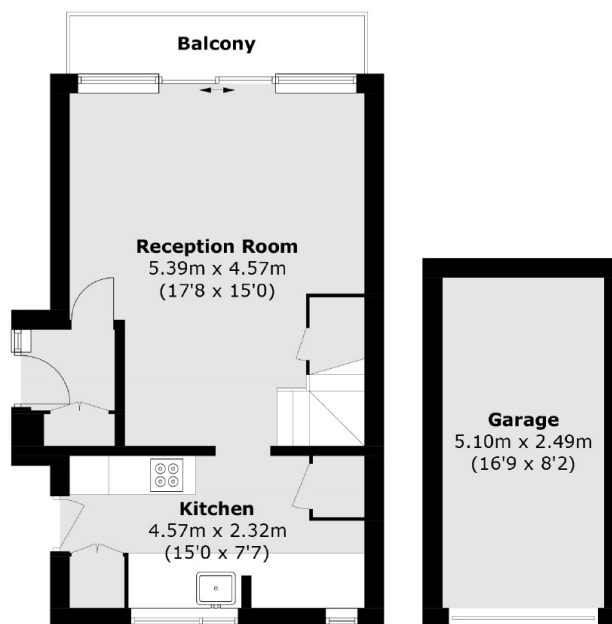
Features

- Stunning Apartment
- Split Level
- Two Double Bedrooms
- Private Balcony And Communal River Gardens
- Parking And Garage

Broom Close, Teddington, TW11



Third Floor



Second Floor

**(Not Shown In Actual
Location / Orientation)**

Total area (approx.): 82.2 sq. m (884.8 sq. ft)
Garage: 12.7 sq. m (136.7 sq. ft)
Balcony: 4.1 sq. m (44.1 sq. ft)