



## Park Road, TW11

£299,950

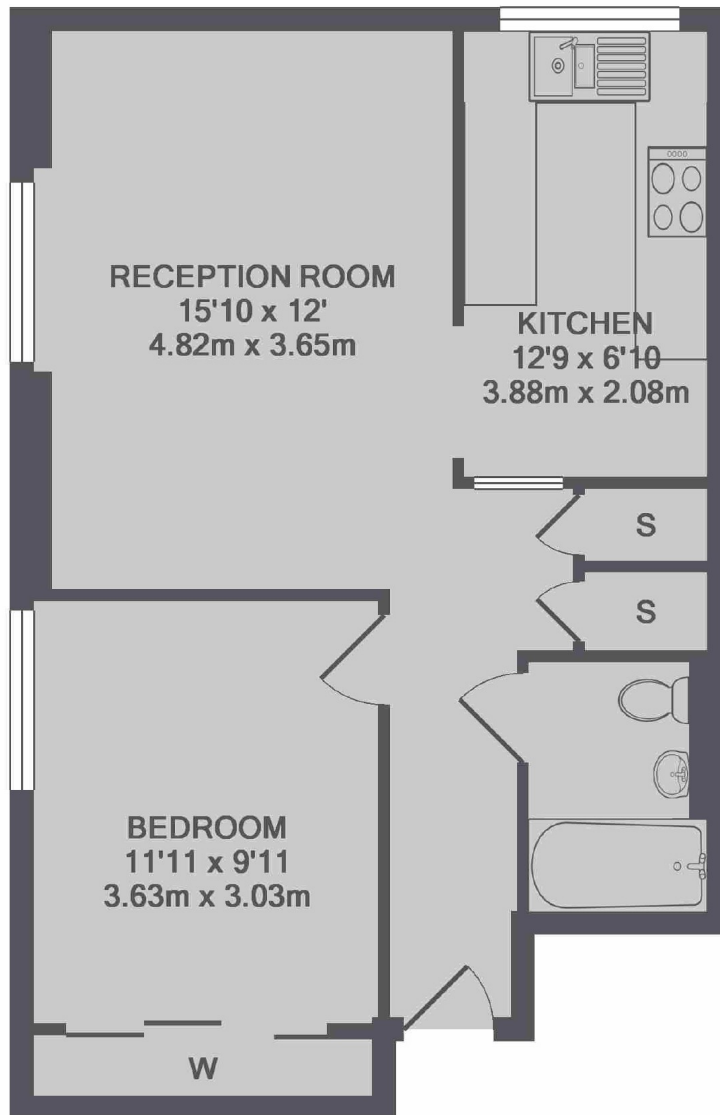
Looking for a central location look no further this one bedroom apartment is ideal for transport, shopping and heading out on an evening. In good order throughout this apartment also has no onward chain.

Tudor Court is off Park Road. Teddington mainline station is close by along with plenty of bus routes. Shops, bars and restaurants are all within easy reach along with Bushy Park and the river.

### Features

Double Glazed  
Modern Kitchen  
Fitted Wardrobes  
Top Floor  
No Onward Chain  
Excellent Location

## Park Road, Teddington, TW11



TOTAL APPROX. FLOOR AREA 536 SQ.FT. (49.8 SQ.M.)

### Contact

To arrange a viewing call our office on the number below or visit our website.



Energy Rating: E. We aim to make our particulars both accurate and reliable. However they are not guaranteed; nor do they form part of an offer or contract. If you require clarification on any points then please contact us, especially if you're traveling some distance to view. Please note that appliances and heating systems have not been tested and therefore no warranties can be given as to their good working order.