



**Blackmores Grove, TW11**  
**£435,000**

**Dexters**



## Blackmores Grove, TW11

This beautiful apartment is located in the heart of Teddington close to transport links and Teddington High Street. It is offered in immaculate presentation throughout.

Entering the flat through your own front door you have internal stairs leading to the first floor, here there is space for coats and shoes. To the rear of the property the bedroom offers double fitted wardrobes and views over the gardens.

The kitchen/breakfast room is situated in the centre of the flat along with the bathroom. To the front of the building there is a 15ft reception room with plenty of space to relax and dine, this room is exceptionally spacious and light; a perfect centrally located flat.

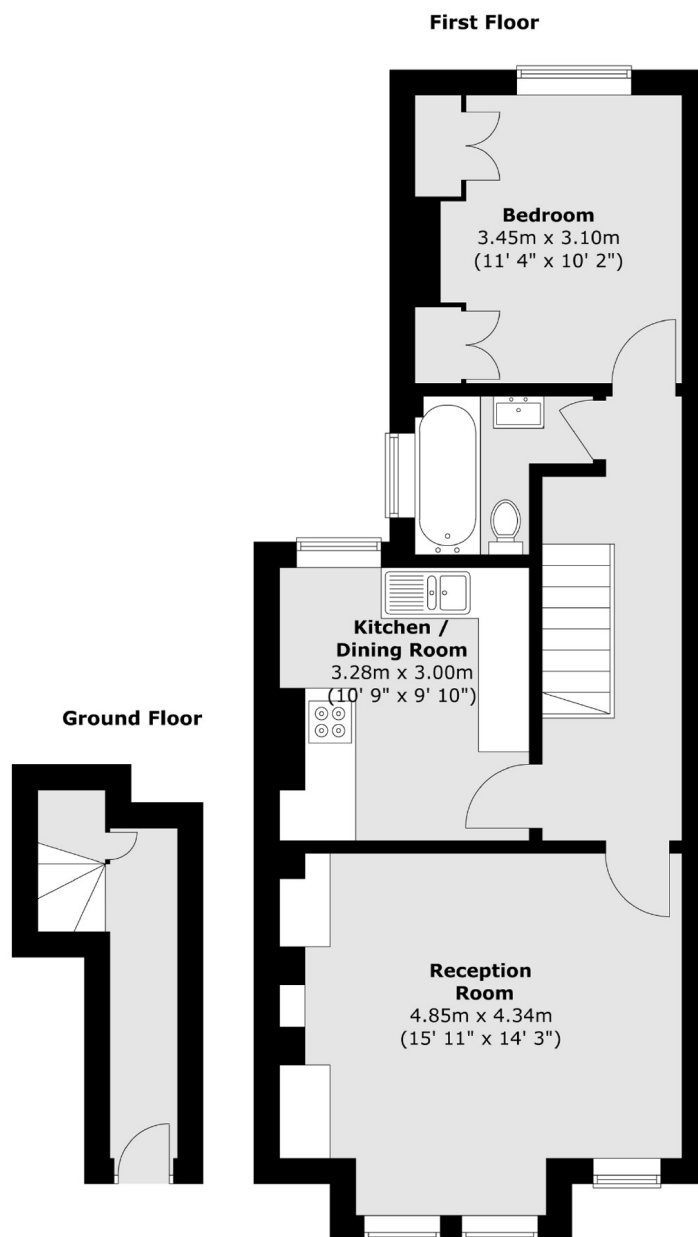
Blackmores Grove is located off Station Road just 0.1 miles to Teddington mainline station with its direct trains to London. This popular road is in a lovely position central to independent and High Street shops and close to excellent schools.

### Features

- Central Location
- Immaculate Presentation
- Large Double Bedroom
- Character Features
- Excellent Storage
- Period Features



# Blackmores Grove, Teddington, TW11



Total area (approx.) : 58.7 sq. m (632 sq. ft)

## Dexters

Teddington  
61 High Street  
Teddington  
TW11 8HA  
Sales  
020 8288 8288

Energy Rating: D. We aim to make our particulars both accurate and reliable. However they are not guaranteed; nor do they form part of an offer or contract. If you require clarification on any points then please contact us, especially if you're traveling some distance to view. Please note that appliances and heating systems have not been tested and therefore no warranties can be given as to their good working order.

 **RICS** | Regulated  
Estate Agent  
and Letting Agent

[dexters.co.uk](https://www.dexters.co.uk)