



## Church Grove, KT1

£469,950

This apartment is located on the first floor and offers spacious accommodation throughout, along with being in an excellent position for transport into London. Opposite Royal Bushy Park this home offers two double bedrooms and is an enviable place to live.

Heron House is located off The Grove and there is easy access to Hampton Wick Station, Hampton Wick High Street, Teddington High Street, Kingston Town Centre and River Thames. Royal Bushy Park, Home Park and Hampton Court Palace are all within easy reach.

### Features

- First Floor
- Two Bedrooms
- No Onward Chain
- Unallocated Parking
- Excellent Location
- Well Presented Throughout



## Church Grove, KT1

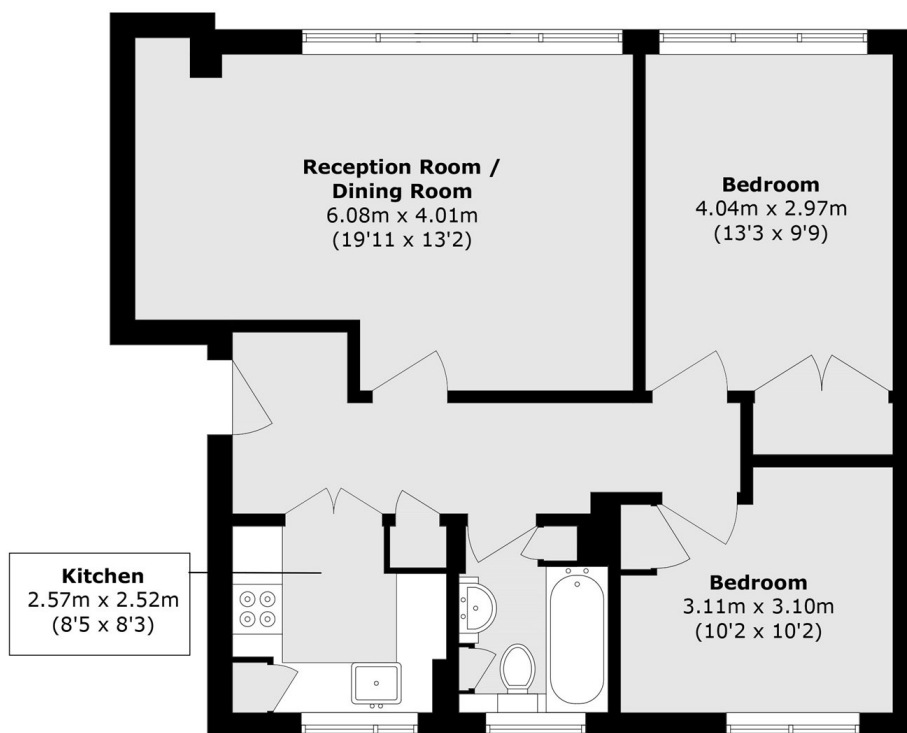
Enter into the hallway which offers plenty of storage and leads to all rooms. The reception room has large windows providing plenty of natural light all year around along with seeing some lovely evening skies and sun sets. There is plenty of room to be able to relax as well as dining. The modern kitchen is opposite with plenty of storage and space for all white goods.

There are two double bedrooms, both providing fitted storage, one with an outlook to the front of the building and the second bedroom to the rear. Completing the apartment there is a modern bathroom. Further benefits include off-street parking for residence on a first come first served basis.





# Church Grove, Kingston Upon Thames, KT1



Total area (approx.): 66.5 sq. m (715.8 sq. ft)