



Kingston Lane, TW11
£599,950

Dexters



Kingston Lane, TW11

Viewings available from the 14th of January 2026. This unique apartment is 968 sq ft and tastefully designed throughout. Being split level it offers a thoughtful layout designed to maximise space making it easy to live. The location is central and there is parking.

Entering the apartment from the hallway there is a large reception room, perfect for entertaining, living and dining with large windows bringing in plenty of natural light. From this room you access the kitchen which is modern offering integrated appliances. Completing this floor there is a cloakroom.

There are two generous double bedrooms with modern wooden flooring. The master bedroom is currently at the rear which accesses the private patio via French doors. In addition there is a utility room and a bathroom which has a bath and separate walk in shower room plus plenty of storage.

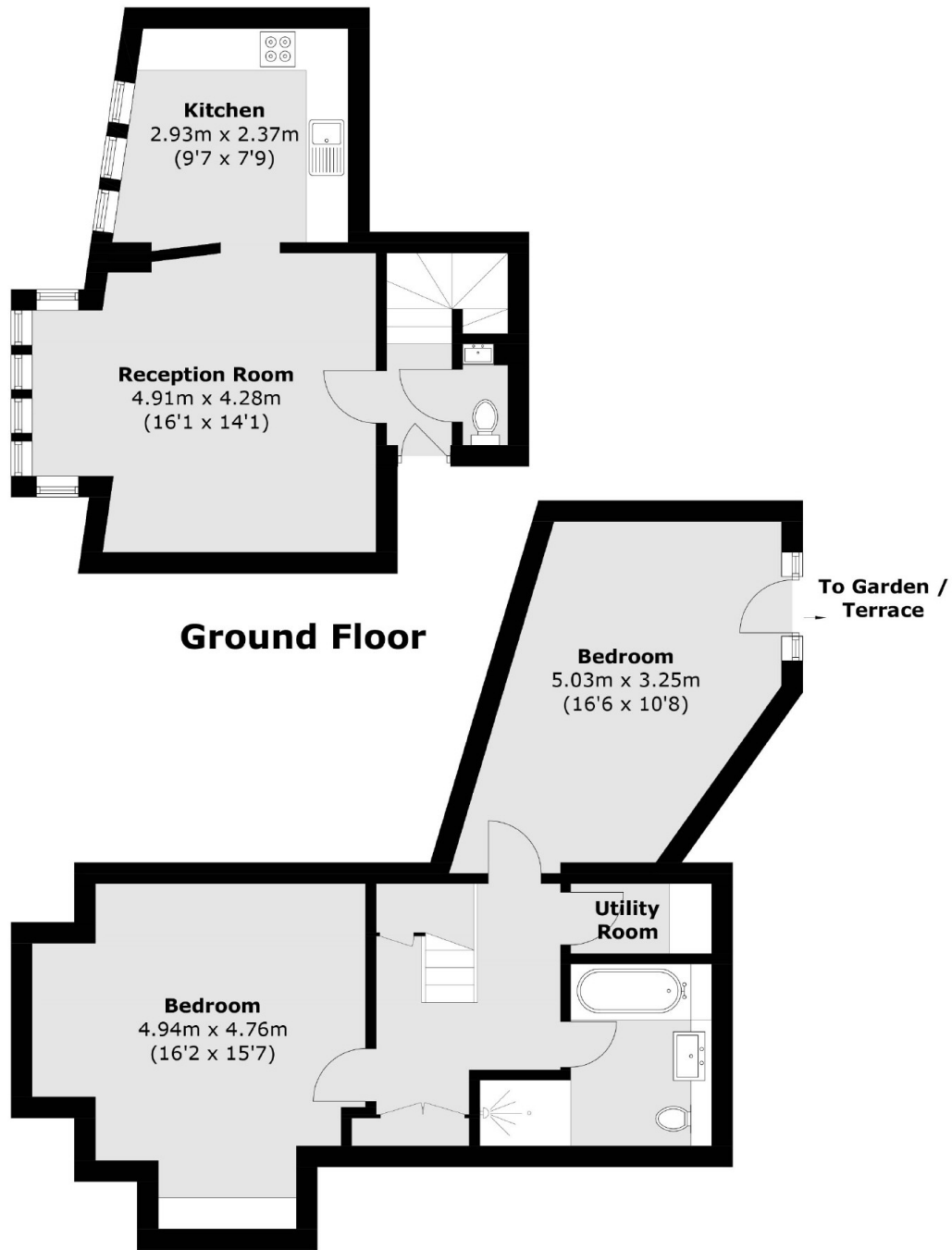
Kingston Lane is a turning off Teddington High Street. Perfect for Transport links and school catchment. Teddington High Street offers local and well known retailers. The River Thames and Royal Bushy Park are close by.

Features

- No Onward Chain
- Two Double Bedrooms
- Allocated Parking
- High Ceilings
- Private Patio
- Central Location



Kingston Lane, Teddington, TW11



Total area (approx.): 90.0 sq. m (968.8 sq. ft)

Dexters

Teddington
61 High Street
Teddington
TW11 8HA
Sales
020 8288 8288

Energy Rating: C. We aim to make our particulars both accurate and reliable. However they are not guaranteed; nor do they form part of an offer or contract. If you require clarification on any points then please contact us, especially if you're traveling some distance to view. Please note that appliances and heating systems have not been tested and therefore no warranties can be given as to their good working order.

 **RICS** | Regulated
Estate Agent
and Letting Agent

[dexters.co.uk](https://www.dexters.co.uk)