



The Causeway, TW11

£385,000

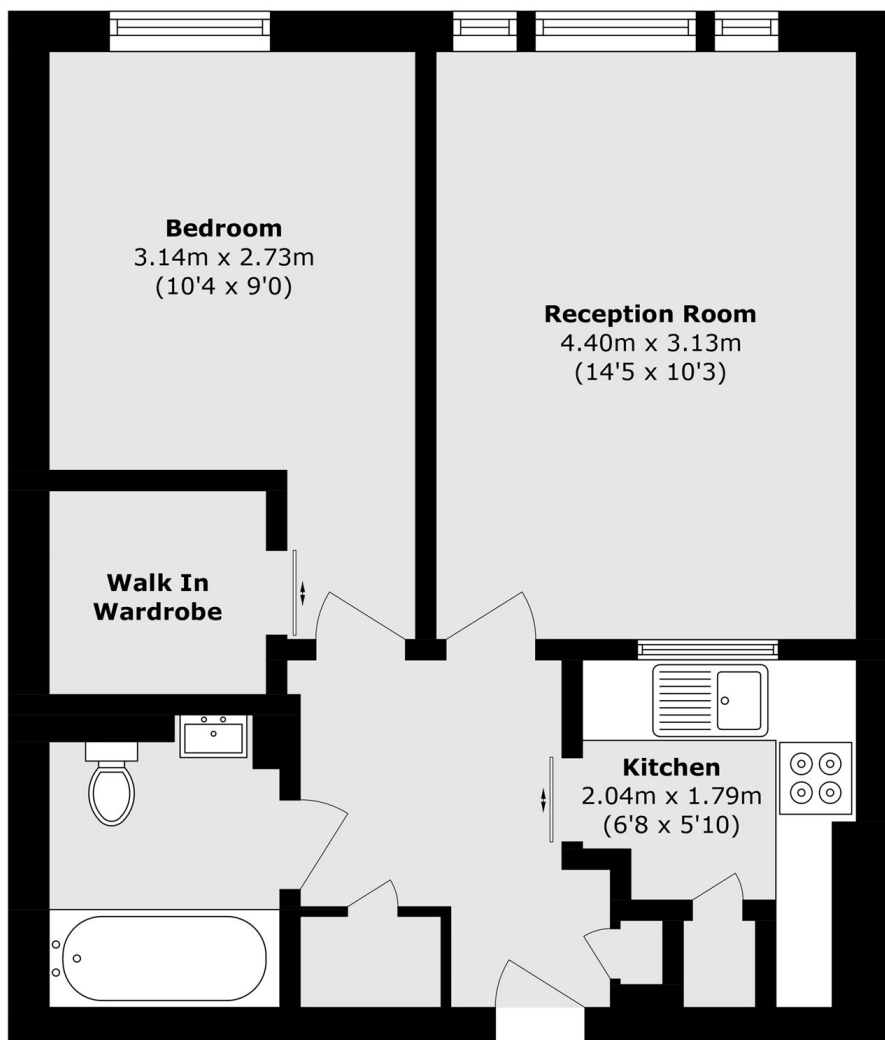
A stylish one double bedroom apartment in the heart of Teddington that has high ceilings, modern fitted kitchen and walk in wardrobe. This property is located in central Teddington and offered with no onward chain.

The causeway is situated in the heart of Teddington, only a short walk from the High Street and mainline station, surrounded by the ever so beautiful Bushy Park.

Features

- Modern Apartment Block
- High Ceilings
- No Onward Chain
- Double Bedroom
- Walk-In Wardrobe
- Central Location

The Causeway, Teddington, TW11



Total area (approx.): 42.7 sq. m (459.6 sq. ft)