



Gomer Gardens, TW11

£1,250,000

Dexters



Gomer Gardens, TW11

Located in central Teddington, in the heart of the High Street is this stunning Victorian four bedroom home. The property is well presented and full of character. An excellent position for transport links and schools.

From the entrance hallway there is access to all rooms with solid wood flooring throughout. The reception has cleverly been separated via floor to ceiling sliding doors making this a separate space or open plan.

The back of the house has been opened up with a dining area which leads in to the designer kitchen/breakfast room. This room has integrated appliances and bi folding doors onto the garden.

There are four bedrooms, two double bedrooms and a family bathroom on the first floor then a further two double bedrooms to the top floor along with a shower room.

Located in this quiet cul-de-sac, Teddington mainline station is within easy reach as is the High Street with shops/bars and restaurants. Bushy Park and The River are close by and school catchment is excellent.

Features

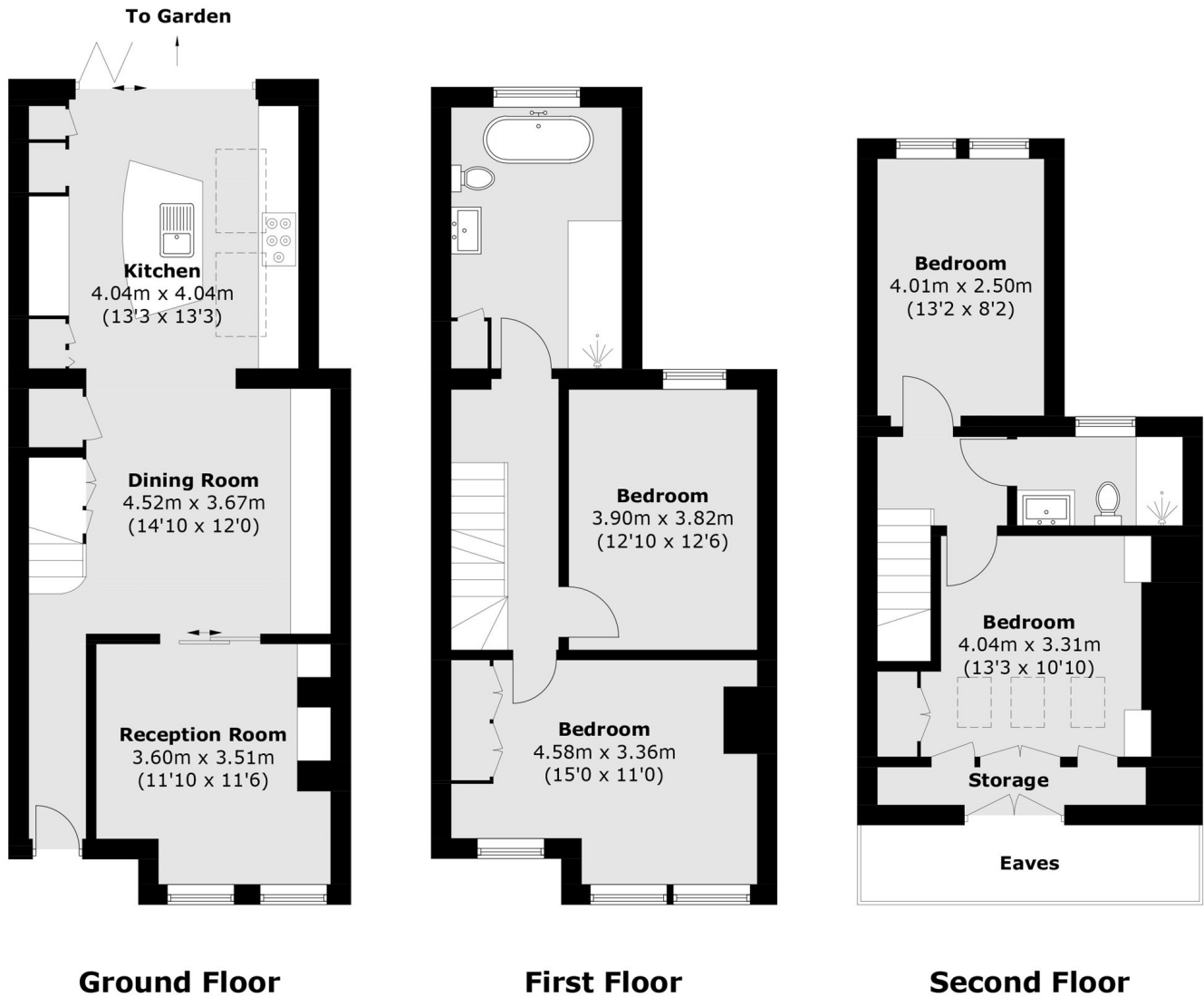
- Four Bedrooms
- Immaculate Presentation
- Central Location
- Secluded Garden
- Excellent For Transport Links







Gomer Gardens, Teddington, TW11



Total area (approx.): 127.4 sq. m (1,371.2 sq. ft)
(Excluding Eaves)