



Broom Park, TW11

£995,000

This modern townhouse is offered with no onward chain, this development is situated along the banks of the River Thames with access to Riverside Gardens.

Broom Park is a turning off Broom Road. An excellent spot for transport links from Hampton Wick and Teddington mainline station. Teddington High Street and Kingston Town Centre are within easy reach. Residents also have access to the river via a private slipway, perfect for kayaking and stand up paddleboarding

Features

- No Onward Chain
- Excellent Condition Throughout
- Three Double Bedrooms
- Three Bathrooms & Cloakroom
- Utility Room
- Riverside Gardens



Broom Park, TW11

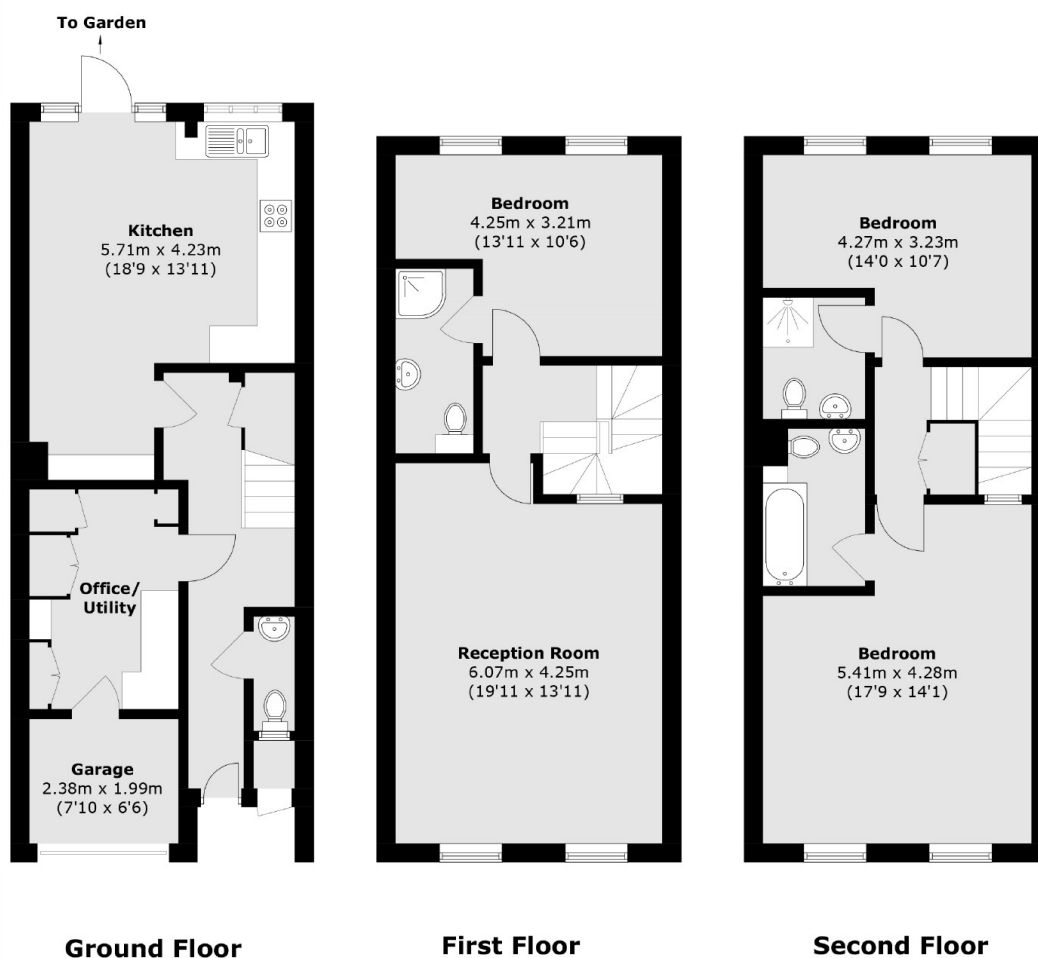
Entering the house there is a cloakroom and access to a garage and utility room. The ground floor opens into a kitchen/breakfast room and access onto the garden.

To the first floor which has been newly carpeted, there is a double bedroom with built in wardrobes and en suite bathroom, as well as a 19ft reception room. To the top floor there are two further bedrooms; a double room with an en suite bathroom and fitted wardrobes, plus an en suite shower room then another double bedroom. All three bathroom and WC have been newly installed.

There is off-street parking to the front of the house and a private courtyard garden to the rear.



Broom Park, Teddington, TW11



Approx Internal Area: 140.2 sq. m (1,509.1 sq. ft)
External Cupboard: 0.5 sq. m (5.4 sq. ft)