



High Street, KT1

£279,950

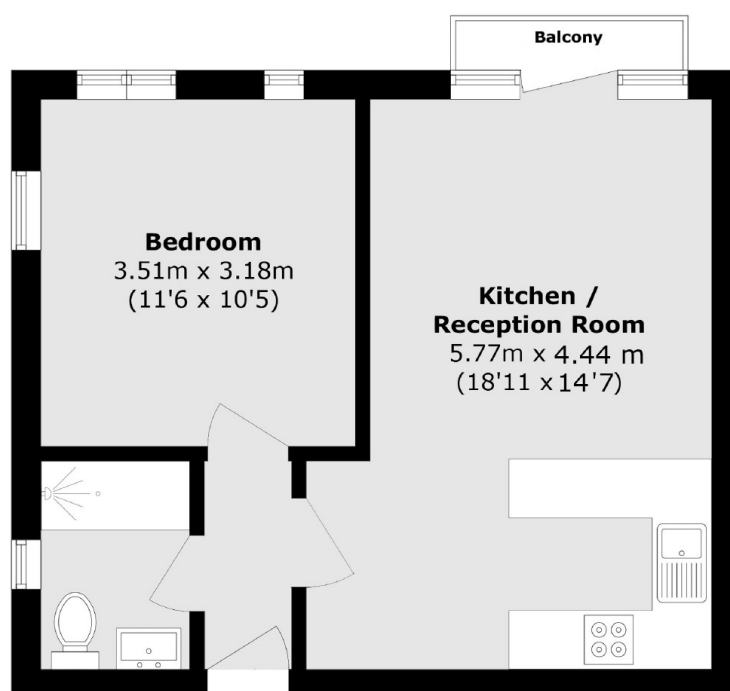
This one bedroom flat is on the second floor in an excellent position with superb travel links and proximity to amenities. This is an ideal purchase for a first time buyer or investor!

The High Street offers local shops and you are also close to Kingston town centre and Teddington High Street. Hampton Wick mainline station is very close by.

Features

- No Onward Chain
- Excellent Location
- One Double Bedroom
- Great Condition
- Close To Transport Links
- Open Plan Living

High Street, Kingston Upon Thames, KT1



Total area (approx.): 39.1 sq. m (420.9 sq. ft)

Balcony area (approx.): 1.2 sq. m (12.9 sq. ft)