



Thamespoint, TW11

£575,000

A beautifully presented two bedroom ground floor apartment in this exclusive riverside development with a large 310 sq ft private terrace overlooking The Thames and access to moorings.

Thamespoint is an exclusive riverside development with a mooring option, located off Broom Road in Teddington.

Features

- Beautiful Apartment
- Two Bedrooms
- Large Private Terrace
- Swimming Pool
- Caretaker
- Tennis Court



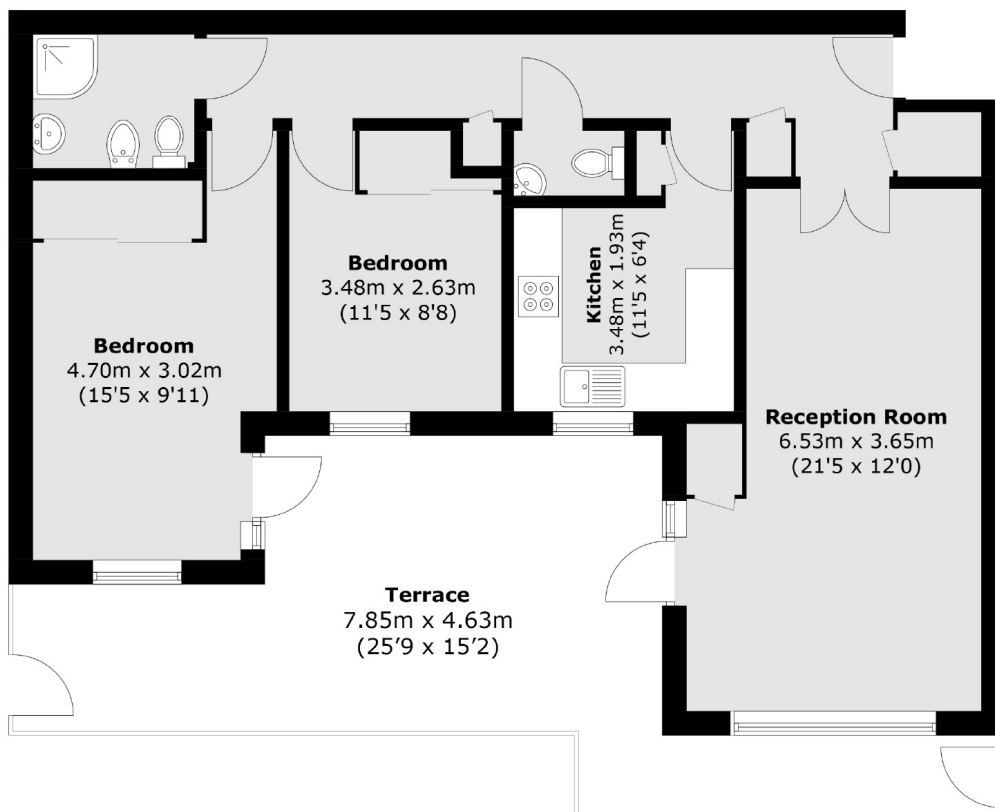
Thamespoint, TW11

Accommodation is made up of a spacious double reception room with dining, and living space with access riverside terrace. There is a stylish, modern integrated kitchen. The principal double bedroom has built-in wardrobes and access to terrace with a second bedroom and bathroom.

The development benefits from a resident's heated swimming pool with changing rooms, tennis court, well kept communal gardens, caretaker and private car port. Offered with no onward chain.



Thamespoint, Teddington, TW11



Ground Floor

Total area (approx.): 72.3 sq. m (778.2 sq. ft)
Terrace area (approx.): 28.8 sq. m (310.0 sq. ft)