



Station Road, TW11

£1,095,000

Dexters



Station Road, TW11

Located in the heart of Teddington is this spacious five bedroom mid-terrace home. The property is well presented throughout and offers potential for further modernisation and extension (STPP).

Arranged over three floors, the property offers over 1400sqft of flexible living space, retaining many period features including high ceilings, original fireplaces and sash windows. The ground floor comprises a welcoming entrance hall, double reception room offering plenty of light and a separate kitchen with direct access to a private rear garden, perfect for outdoor entertaining or future landscaping.

There is potential STPP to open up the ground floor to add further square footage.

The first and second floors offer four double bedrooms and a fifth office/study room. This space is completed with two bathrooms.

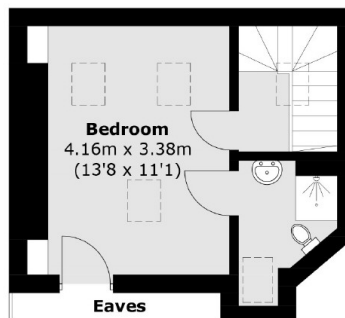
This home is located just moments from Teddington High Street, with its array of boutique shops, cafés, and restaurants, and within easy reach of the River Thames and the beautiful expanses of Bushy Park. Station Road is an excellent area for school catchment.

Features

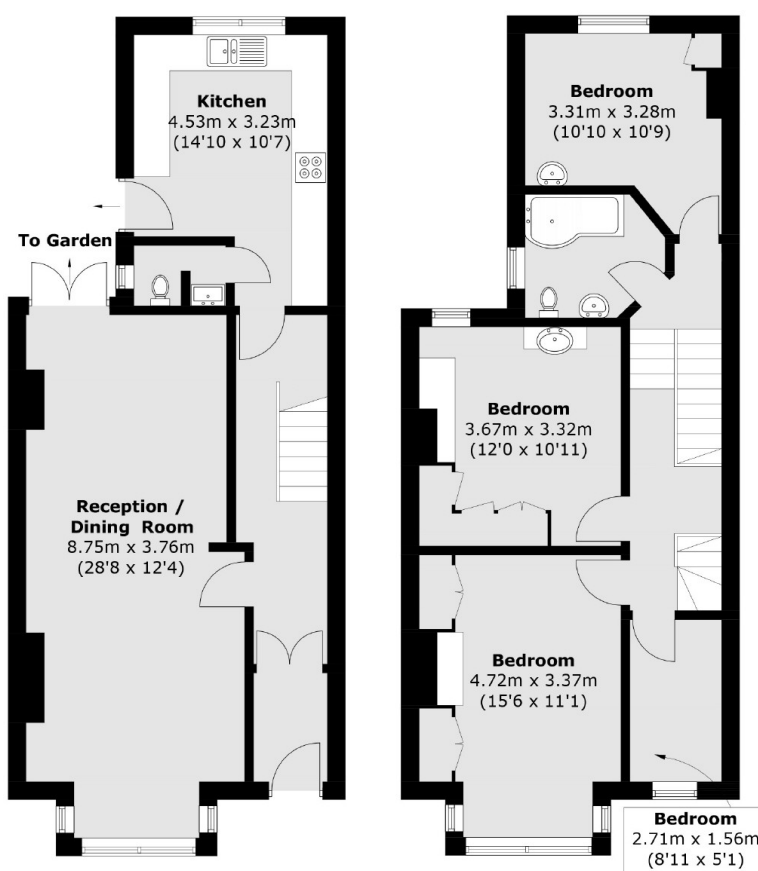
- Central Location
- Period Property
- Potential For Extension (STPP)
- Four/Five Bedroom
- No Onward Chain
- Secluded Gardens



Station Road, Teddington, TW11



Second Floor



Ground Floor

First Floor

Total area (approx.): 134.9 sq. m (1,451.9 sq. ft)
(Excluding Eaves)