



Park Road, KT1

£429,950

This stunning apartment is located in a popular development it offers two double bedroom a private balcony and communal gardens along with unallocated parking, one not to be missed.

Park Court is located off Park Road, with easy access to Hampton Wick mainline station and a quarter of a mile from Kingston town centre and next to Bushy Park.

Features

- Two Double Bedrooms
- Excellent Location
- Immaculate Condition
- West Facing Balcony
- Parking
- Communal Gardens



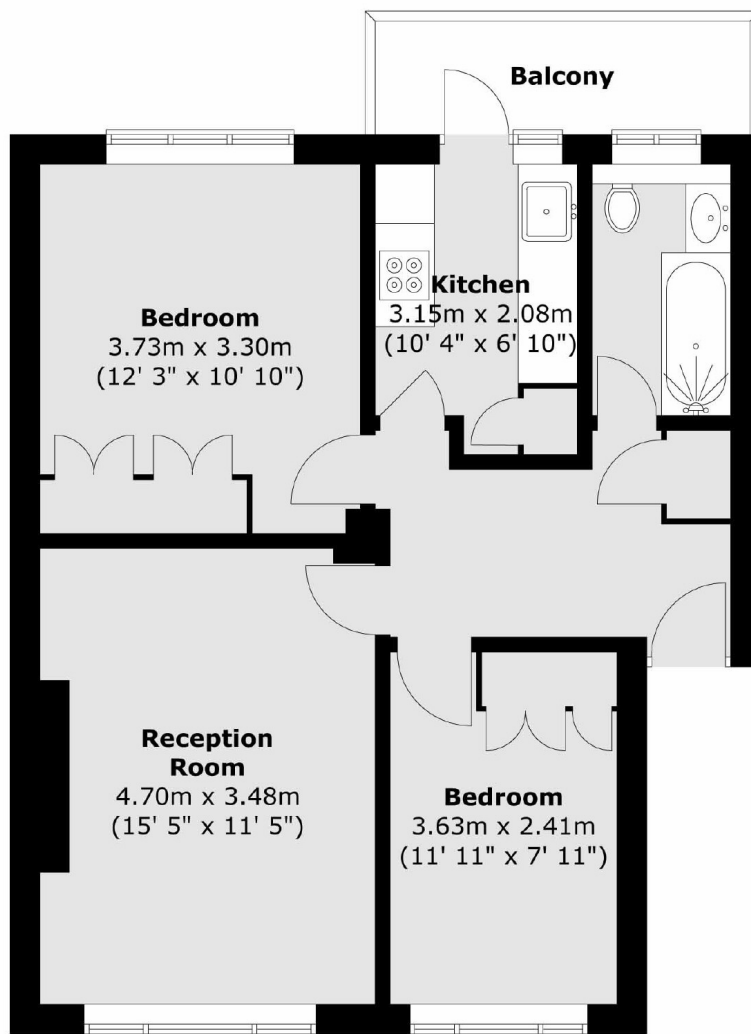
Park Road, KT1

The newly fitted, modern kitchen provides access directly to a private balcony which is perfect for enjoying the views across Hampton Wick whilst enjoying a coffee or glass of wine. There is a spacious, light and airy reception room with a bespoke hand built cupboard/shelving and this room offers plenty of room to relax and to dine. Both of the bedrooms are double rooms with fitted wardrobes in both. Completing the accommodation there is a smart, newly fitted bathroom.

This development has a shortcut to Hampton Wick main line station. Surrounding the development there are communal gardens. This development offers plenty of residents parking.



Park Road, Kingston Upon Thames, KT1



Total area (approx.) : 57.5 sq. m (619 sq. ft)
Total balcony area (approx.) : 4.4 sq. m (48 sq. ft)

Dexters

Teddington
61 High Street
Teddington
TW11 8HA
Sales
020 8288 8288

Energy Rating: C. We aim to make our particulars both accurate and reliable. However they are not guaranteed; nor do they form part of an offer or contract. If you require clarification on any points then please contact us, especially if you're traveling some distance to view. Please note that appliances and heating systems have not been tested and therefore no warranties can be given as to their good working order.

 **RICS** | Regulated
Estate Agent
and Letting Agent

[dexters.co.uk](https://www.dexters.co.uk)