



## Rosebank Close, TW11

£349,950

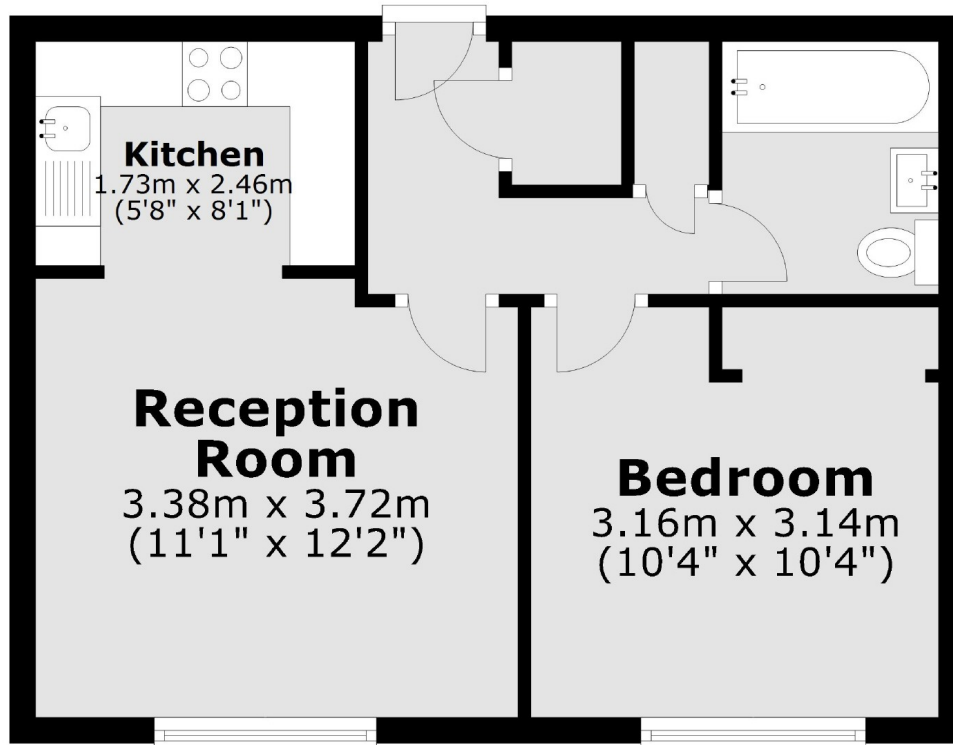
Located in a popular and central location this ground floor apartment is offered with no onward chain. There is also allocated parking to the rear of the building. It is ready to move into.

Rosebank Close is off Fairfax Road. Teddington mainline station is only 0.3 miles away which has direct frequent trains into London. Royal Bushy Park, Teddington High Street and the River Thames are also close by.

### Features

- One Bedroom
- No Onward Chain
- Ground Floor
- Allocated Parking
- Central Location

# Rosebank Close, Teddington, TW11



Total area: approx. 36.2 sq. metres (389.9 sq. feet)