



Bushy Park Road, TW11

£899,950

This beautifully presented Victorian home is located in this popular position close to transport links and schools. There are three bedrooms with a secluded garden and no onward chain.

Bushy Park Road is accessed via Fairfax Road or Kingston Road with access to an orchard at the end of the road and bridge access to Bushy Park. Teddington High Street, mainline station and The River Thames are all close by.

Features

- No Onward Chain
- Victorian
- Three Bedrooms
- Period Features
- Garden
- Well Presented Throughout



Bushy Park Road, TW11

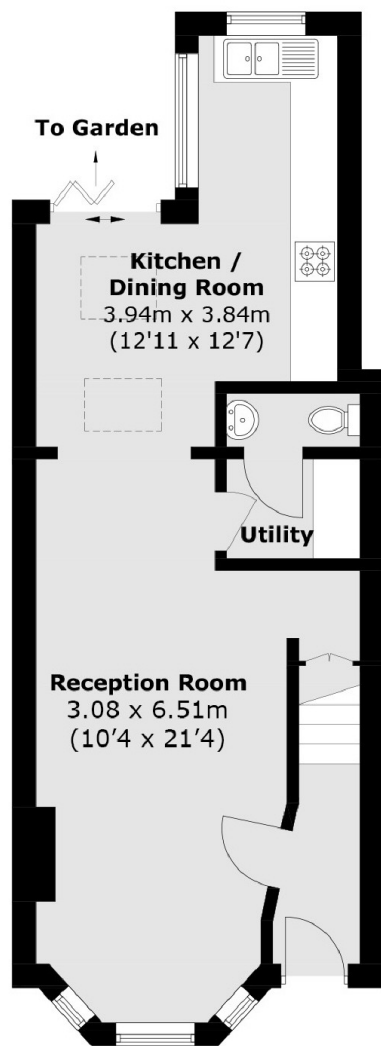
Enter into the hallway and into a through reception room. The living area has a bay window, a feature fireplace with built in storage surrounding and plantation shutters. The dining area leads onto the garden.

The modern kitchen has plenty of storage and space for all appliances. The garden is beautiful and completely secluded with a patio and lawn, at the end of the garden there is access leading on to the Orchard. Completing the ground floor there is a utility room and WC.

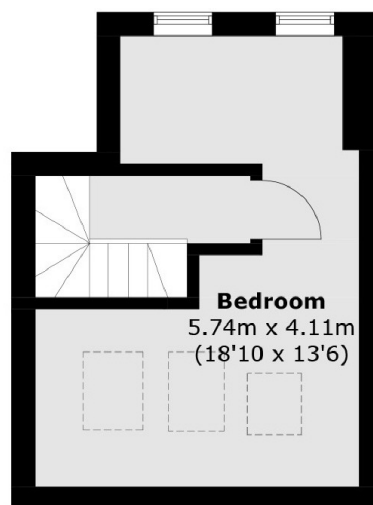
There are two bedrooms to the first floor along with a modern bathroom. There is a further double bedroom to the top floor.



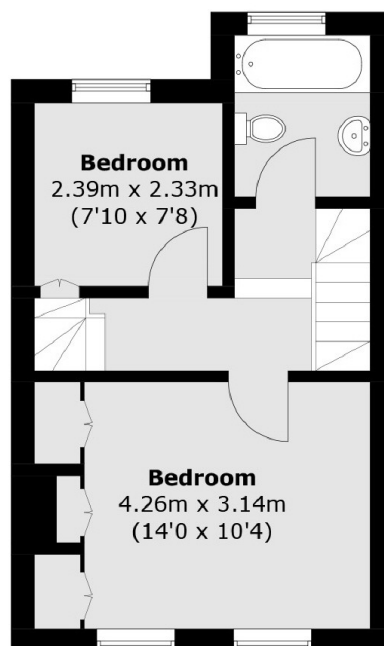
Bushy Park Road, Teddington, TW11



Ground Floor



Second Floor



First Floor

Total area (approx.): 95.7 sq. m (1030.0 sq. ft)

Dexters

Teddington
61 High Street
Teddington
TW11 8HA
Sales
020 8288 8288

Energy Rating: C. We aim to make our particulars both accurate and reliable. However they are not guaranteed; nor do they form part of an offer or contract. If you require clarification on any points then please contact us, especially if you're traveling some distance to view. Please note that appliances and heating systems have not been tested and therefore no warranties can be given as to their good working order.

 **RICS** | Regulated
Estate Agent
and Letting Agent

dexters.co.uk