



## Middle Lane, TW11

### £525,000

This stunning two bedroom apartment is located in the heart of Teddington. It is presented in immaculate order throughout with no onward chain, a must view.

Located in the heart of Teddington; Bushy Park, the High Street, Teddington mainline station, and the riverside are all within easy walking distance. The area also offers an abundance of primary and secondary schools, both state and private education.

### Features

- Central Location
- Second Floor
- Two Double Bedrooms
- Two Bath/Shower Rooms
- Two Balconies
- No Onward Chain



## Middle Lane, TW11

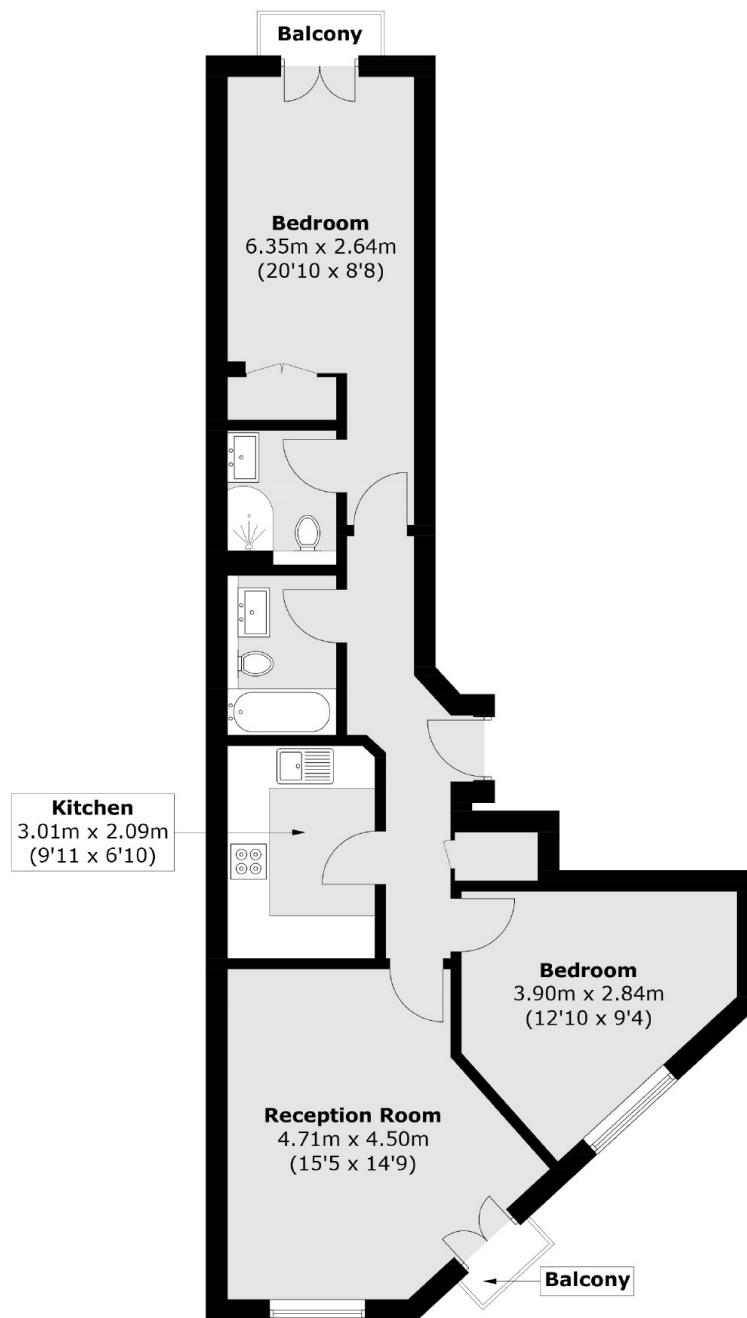
The spacious reception room has double doors and a balcony, this room offers plenty of space to relax and dine creating a fantastic sociable living space. The modern kitchen has integrated appliances.

There are two generous double bedrooms, the master with a newly fitted en suite shower room and fitted wardrobes along with doors leading onto a balcony. Completing the accommodation there is further storage and the family bathroom which has recently been refurbished.





# Middle Lane, Teddington, TW11



Total area (approx.): 65.3 sq. m (702.9 sq. ft)  
Balcony: 1.7 sq. m (18.3 sq. ft)

## Dexters

Teddington  
61 High Street  
Teddington  
TW11 8HA  
Sales  
020 8288 8288

Energy Rating: C. We aim to make our particulars both accurate and reliable. However they are not guaranteed; nor do they form part of an offer or contract. If you require clarification on any points then please contact us, especially if you're traveling some distance to view. Please note that appliances and heating systems have not been tested and therefore no warranties can be given as to their good working order.

 **RICS** | Regulated  
Estate Agent  
and Letting Agent

[dexters.co.uk](https://www.dexters.co.uk)