



Grove Terrace, TW11

£1,250,000

Built by Shell in the 1920's we are proud to offer this rarely available Arts and Crafts home located in the heart of Teddington. The property retains its original charm and character and has a beautiful walled garden. It is offered with no onward chain.

Grove Terrace is a private road with a tranquil setting within easy reach of Teddington High Street and Mainline Station. The location is excellent for local schools. The property is a short walk from Teddington Lock and riverside and moments from Grove Gardens Park and bowling green.

Features

- Sought After Location
- Walled Garden
- Off Street Parking
- Three Double Bedrooms
- Quiet Yet Central Location
- Character Features



Grove Terrace, TW11

This home offers an entrance hallway leading to a dining room opening to a spacious reception room. There is original parquet flooring in both rooms and concertina doors to separate the two or open them up to create a more connected living space. Both rooms provide views of the garden and have original ceiling beams. The charming kitchen features an aga and pantry. A utility room and WC completes the downstairs. This space is ready for your personal touch.

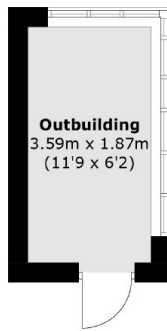
Three well-proportioned bedrooms can be found on the first floor, providing ample space for family living or guest accommodation. Each room offers fitted storage and the potential for personalisation to suit your style. Completing the accommodation, there is a bathroom with separate toilet.

Step outside to a wonderfully sunny garden sheltered by a high wall perfect for outdoor entertaining or tranquil morning coffees.

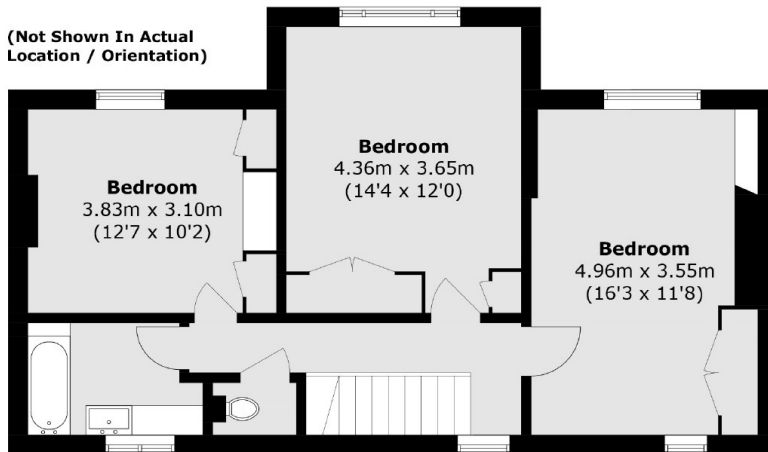
The property includes off-street parking for two cars, a rare find in the heart of Teddington.



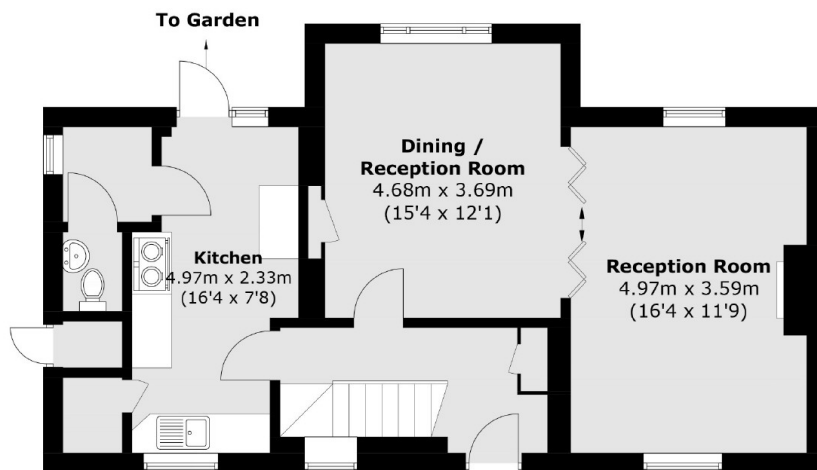
Grove Terrace, Teddington, TW11



(Not Shown In Actual
Location / Orientation)



First Floor



Ground Floor

Total area (approx.): 118.8 sq. m (1278.7 sq. ft)

External Storage (approx.): 0.7 sq. m (7.5 sq. ft)

Outbuilding: 6.8 sq. m (73.2 sq. ft)