



## Waldegrave Road, TW11

£1,995 Per calendar month

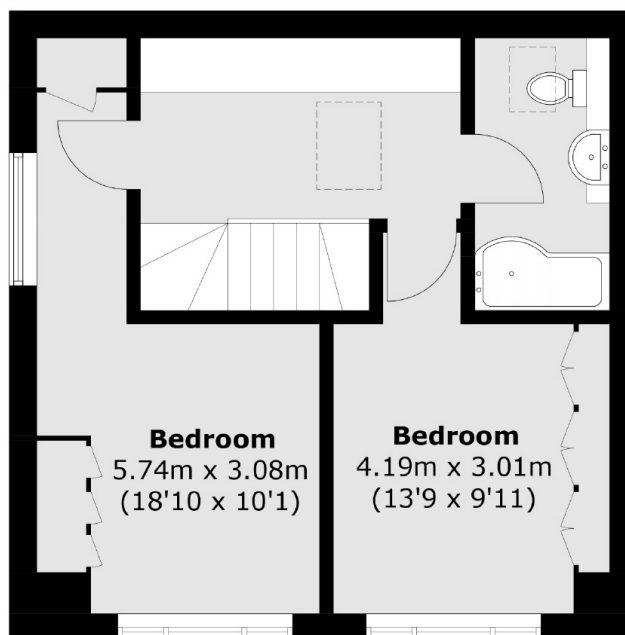
A recently redecorated, modern and well presented split level two double bedroom apartment located close to Teddington High Street. Further benefits include unallocated off street parking.

Waldegrave Road is a turning off Teddington High Street with plenty of shops/bars and restaurants. A great position if you need transport links with Teddington mainline station close by and plenty of bus routes.

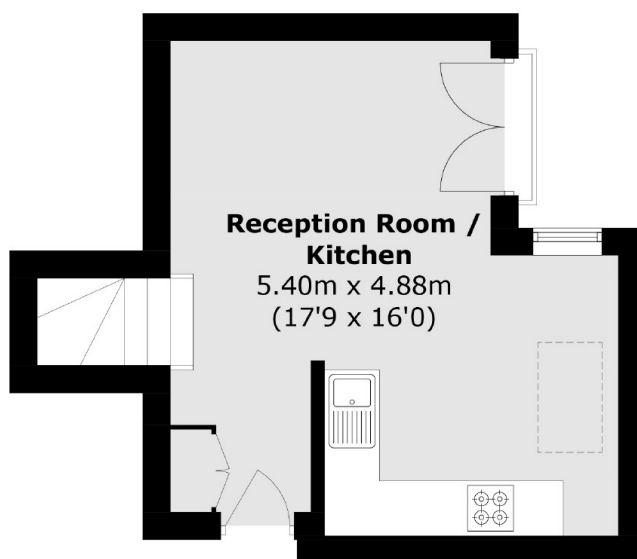
### Features

- Period Building
- Recently Decorated
- Central Location
- Modern Kitchen
- Wooden Floor
- Unallocated Off Street Parking

# Waldegrave Road, Teddington, TW11



**Second Floor**



**First Floor**

Total area (approx.): 63.6 sq. m (684.5 sq. ft)