



Wick Road, TW11

£709,950

This beautifully presented Victorian home is located in this popular position close to Royal Bushy Park, transport links and schools. There are two bedrooms with a lovely secluded garden and no onward chain.

Wick Road is a turning from Bushy Park Road or Kingston Road with access to an orchard at the end of Bushy Park Road and bridge access to Bushy Park. Teddington High Street, mainline station and The River Thames are all close by.

Features

- Amazing Location
- Two Bedrooms
- Scope To Extend STPP
- Secluded Garden
- Modern Kitchen
- No Onward Chain



Wick Road, TW11

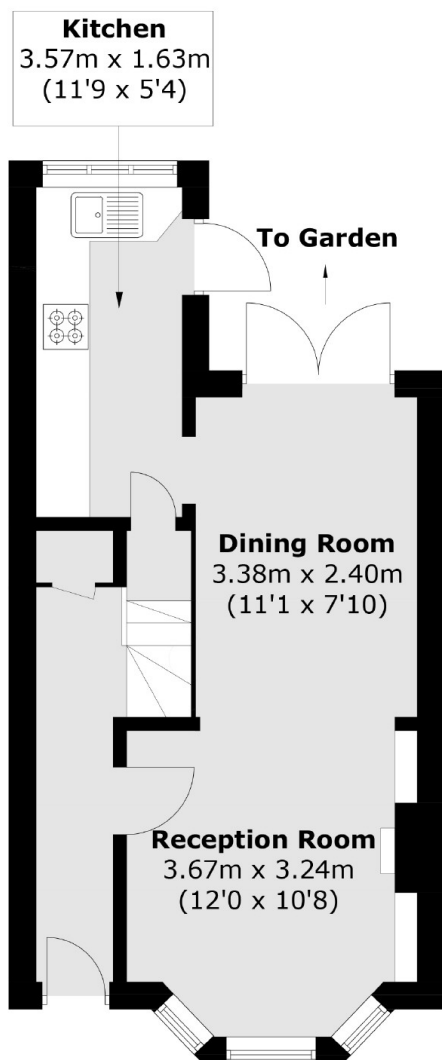
Enter into the hallway and into a through reception room. The living area has a bay window, a feature fireplace with built in storage surrounding. The dining area leads onto the kitchen.

The modern kitchen has plenty of storage with integrated appliances and access into the garden. The garden has a patio and long lawn.

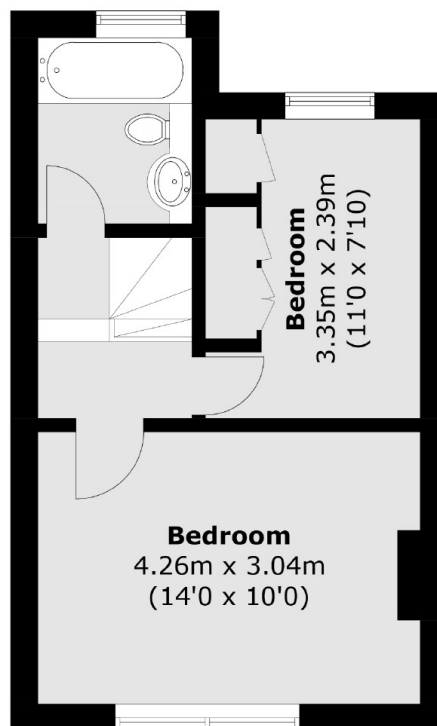
There are two bedrooms to the first floor and a bathroom. There is further scope to extend to the ground floor and into loft subject to planning permission.



Wick Road, Teddington, TW11



Ground Floor



First Floor

Total area (approx.): 62.6 sq. m (673.9 sq. ft)