



Church Road, TW11

£1,250,000

Dexters



Church Road, TW11

A stunning four bedroom semi-detached Victorian home. Enjoy the location, perfect for all amenities and school catchment. There over 1500sq ft making this an easy decision to purchase once you have viewed.

There is a large double reception room with a solid wooden floor, the front reception area provides a Victorian feature fireplace with bespoke fitted storage surrounding. From the second reception area, which would work perfectly as a formal dining room or play room leads onto the kitchen. The 'Callaghan' kitchen offers plenty of storage and central island; the extension creates the family/sociable living leading onto the garden. Completing the ground floor living there is a cloakroom and utility room.

There are three bedrooms on the first floor with a modern family bathroom. To the top floor there is a further double bedroom with an en suite shower room. The garden is the perfect space to enjoy along with providing rear access and a stunning studio/home office. At the rear This location is perfect for schools and a popular spot where people want to live. Do not miss out as this house is in demand.

Church Road is conveniently situated close to Teddington High Street. Royal Bushy Park is close by along with the River Thames and excellent transport links.

Features

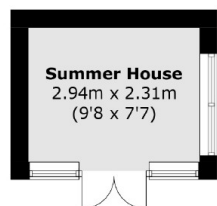
- Four Bedrooms
- Two Bath/Shower Rooms
- Downstairs WC
- Utility Room
- Beautiful Studio/Home office
- Period Features



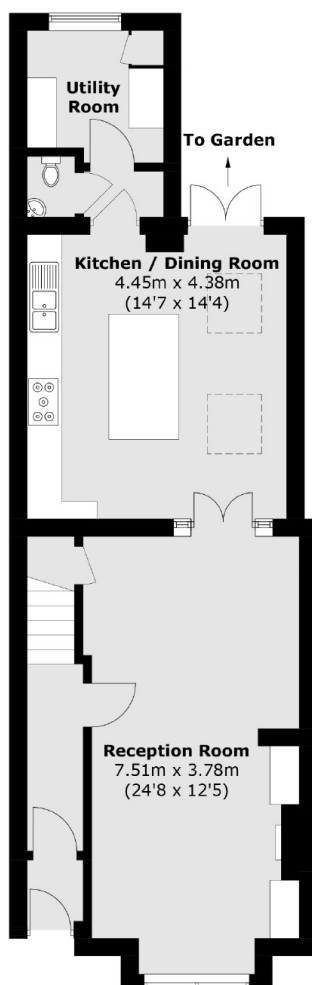




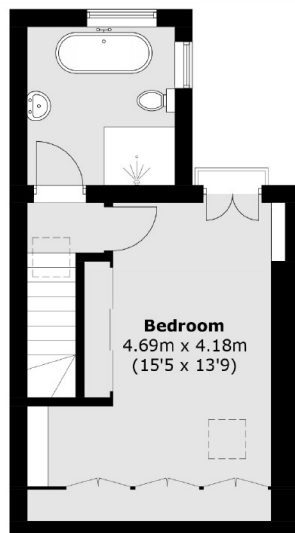
Church Road, Teddington, TW11



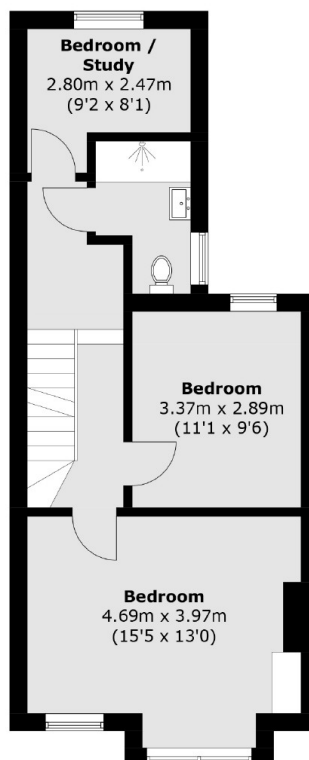
(Not Shown In Actual
Location / Orientation)



Ground Floor



Second Floor



First Floor

Total area (approx.): 142.5 sq. m (1,533.8 sq. ft)
Outbuilding (approx.): 7.0 sq. m (75.3 sq. ft)