



## Saddlers Mews, KT1

£2,995 Per calendar month

**Dexters**



## Saddlers Mews, KT1

A stunning three bedroom house in excellent condition, located in a private gated development. With two bathrooms and ample living space for the growing family.

To the ground floor there is a separate kitchen, cloakroom and a spacious reception room leading to a conservatory with doors to a private secluded garden.

To the first floor there is master bedroom with an en suite shower room and built in wardrobe space, two further bedrooms and a family bathroom. Further benefits include private parking for two cars.

Saddlers Mews is in the heart of Hampton Wick less than 400 yards to direct train links to London Waterloo and Richmond with it's underground. It's also less than half a mile from Kingston Town Centre with it's highly regarded shopping and restaurants. The historic Bushy Park is on your doorstep, which is perfect for family walks at the weekend or a jog after a stressful day in the office.

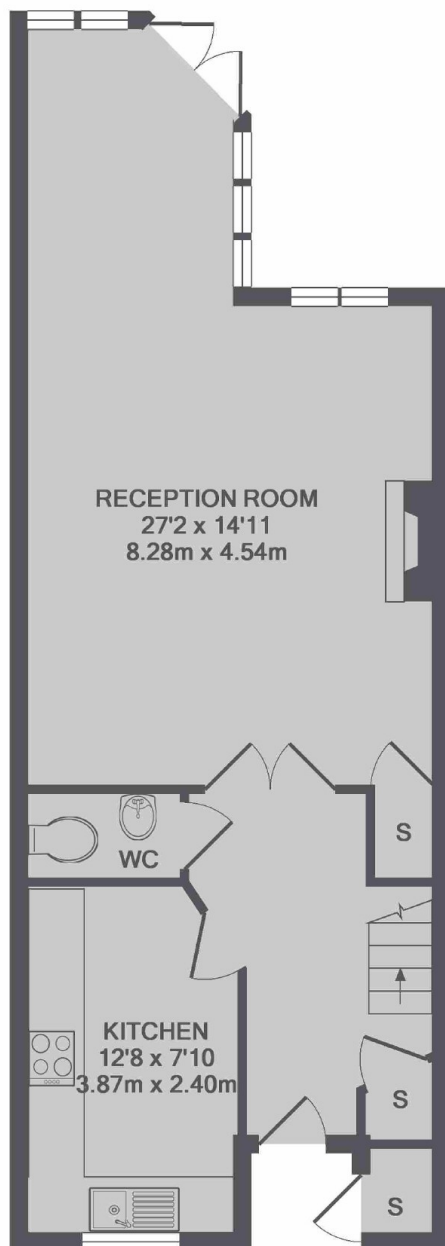
### Features

- Three Bedrooms
- Parking For Two
- Gated Development
- Moments From Train Links
- Excellent Local Schools
- Two Bathrooms

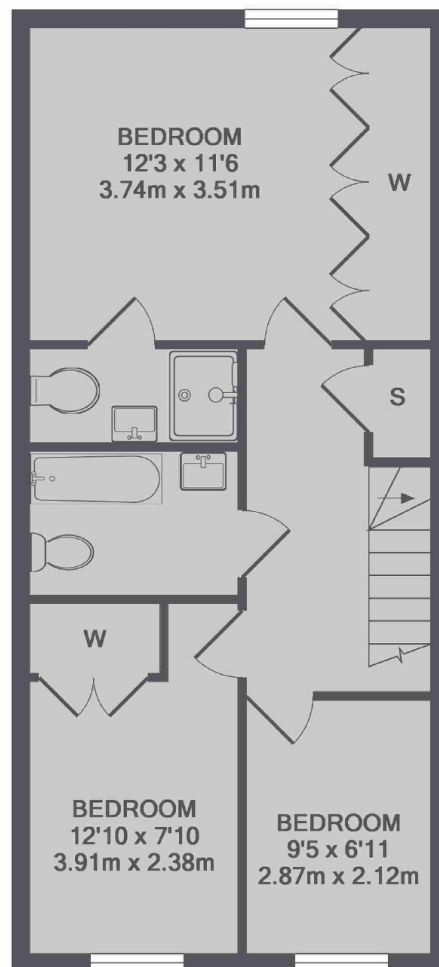




# Saddlers Mews, Kingston Upon Thames, KT1



GROUND FLOOR



1ST FLOOR

TOTAL APPROX. FLOOR AREA 1046 SQ.FT. (97.1 SQ.M.)

## Dexters

Teddington  
61 High Street  
Teddington  
TW11 8HA  
Lettings  
020 8288 2900

Energy Rating: C. We aim to make our particulars both accurate and reliable. However they are not guaranteed; nor do they form part of an offer or contract. If you require clarification on any points then please contact us, especially if you're traveling some distance to view. Please note that appliances and heating systems have not been tested and therefore no warranties can be given as to their good working order.

 **RICS** | Regulated  
Estate Agent  
and Letting Agent

[dexters.co.uk](https://www.dexters.co.uk)