



Sydney Road, TW11

£739,950

This stunning Victorian home is located in the heart of Teddington. The property is presented in immaculate condition throughout. There are two double bedrooms and a large private garden offering the perfect entertaining space.

Sydney Road is a quiet cul-de-sac off Church Road, close to shops, bars and restaurants. An excellent location for highly regarded, Ofsted Outstanding rated schools, excellent transport links including being close to Teddington station which serves Waterloo. Bushy Park and The River Thames are close by.

Features

- Victorian Cottage
- Excellent Location
- Large Living Space
- Two Bedrooms
- Lovely Rear Garden
- No Onward Chain



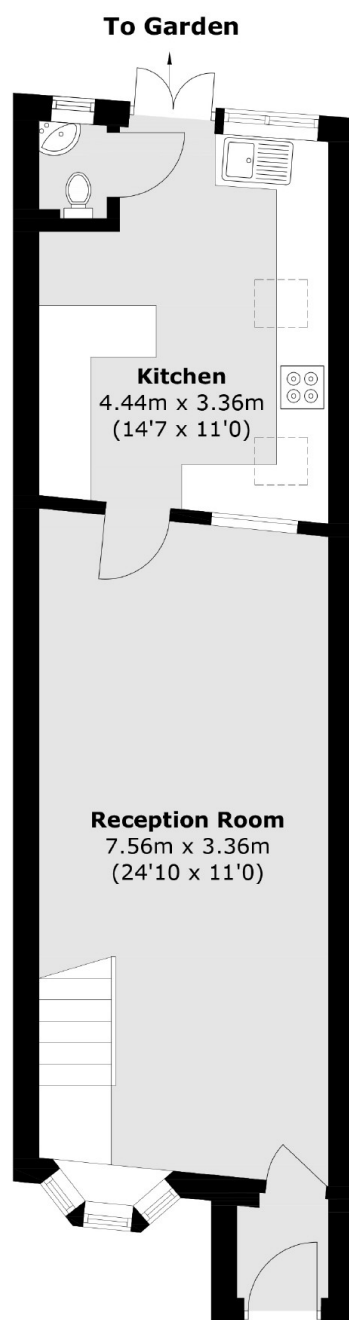
Sydney Road, TW11

Located in a quiet cul-de-sac close to the High Street is this exceptional Victorian home. Enter into the property through the porch and into the reception room. This room is light and spacious offering plenty of space to relax and then dine. The extension to the rear of the property provides a modern kitchen/breakfast room and access to the garden. Completing the ground floor is a cloakroom.

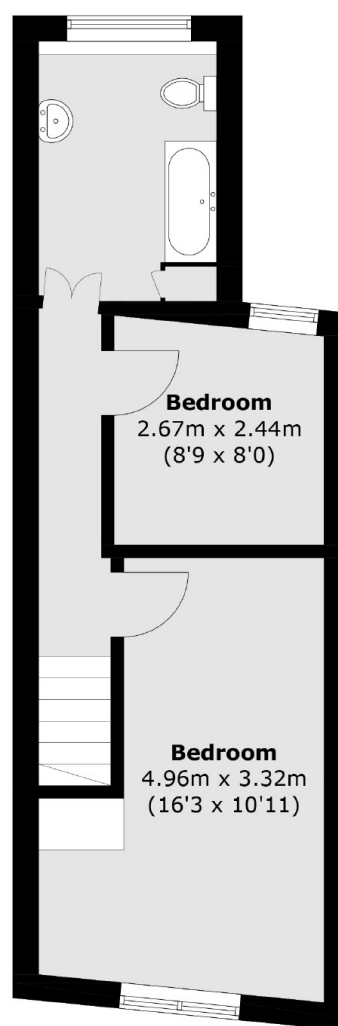
To the first floor there are two double bedrooms and a large bathroom. There is additional storage space in the loft which could potentially be converted STPP. The garden is lovely and secluded along with being easy to maintain with rear access.



Sydney Road, Teddington, TW11



Ground Floor



First Floor

Total area (approx.): 74.8 sq. m (805.1 sq. ft)