



Wick Road, TW11

£879,950

Dexters



Wick Road, TW11

Set in this perfect spot, close to schools, transport links and Royal Bushy Park. There is over 1200 sq ft with four bedrooms and flexible accommodation.

The accommodation is arranged over three floors with high ceilings throughout as well as being very light and spacious. The hallway leads through to a reception area and then a separate dining room. Completing the ground floor there is a modern kitchen and access onto the garden. Which opens onto the kitchen with access onto the garden.

To the first floor there are two double bedrooms and a modern shower room and to the top floor there are a further two double bedrooms and a bathroom.

The garden is paved and benefits from rear access.

Wick Road is situated between Kingston Road and Bushy Park Road offering easy access to Bushy Park. Hampton Wick mainline station is just 0.37 miles away.

Features

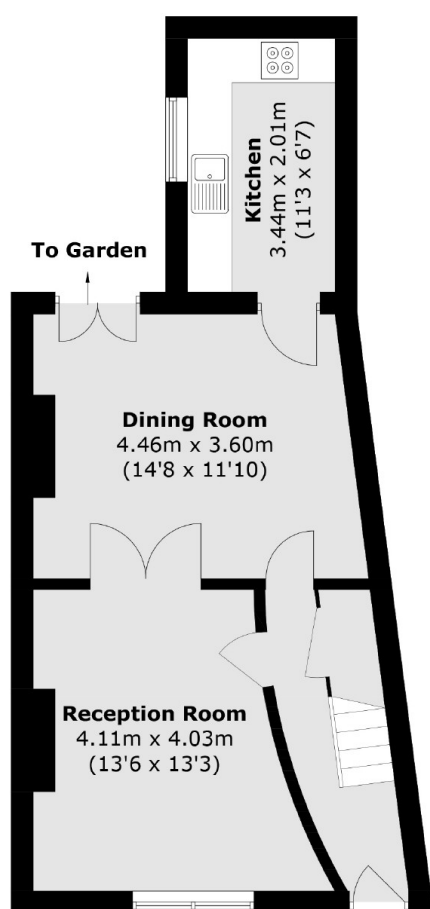
- No Onward Chain
- Four Double Bedrooms
- Two Reception Rooms
- Two Bath/Shower Rooms
- Excellent Location
- Newly Decorated



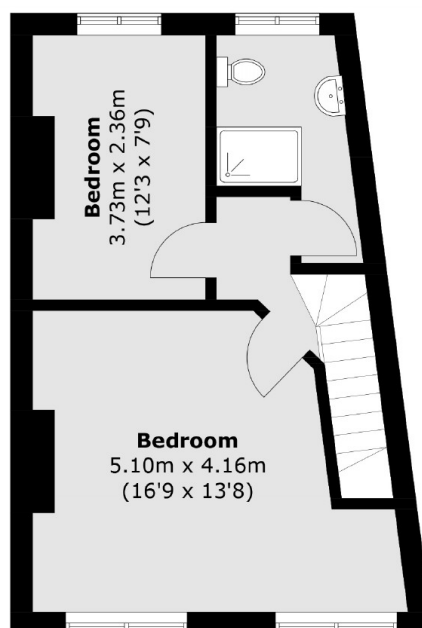




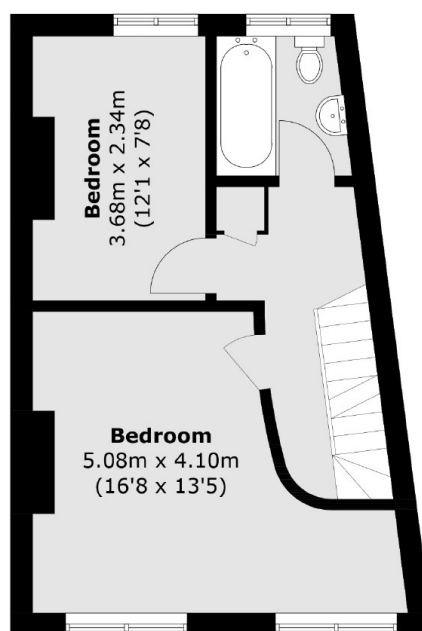
Wick Road, Teddington, TW11



Ground Floor



Second Floor



First Floor

Total area (approx.): 116.1 sq. m (1,249.7 sq. ft)