



## St. Marks Road, TW11

**£2,295** Per calendar month

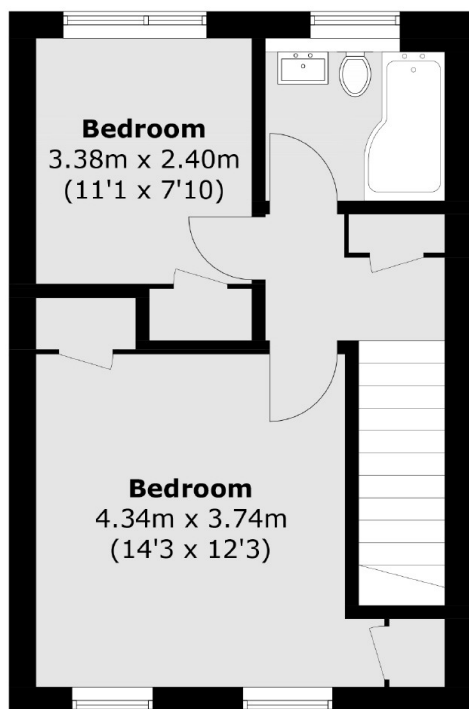
This newly refurbished split level maisonette is light and airy throughout, with a high specification open plan kitchen and living room, two bedrooms and a modern bathroom upstairs.

St. Marks Road is a popular road close to Kingston Road to catch a bus or to get to the River Thames. Surrounded by excellent schools, Teddington station and Teddington high street with shops and restaurants nearby.

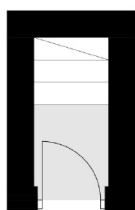
### Features

- Excellent Condition
- Two Bedrooms
- Private Entrance
- Open Plan Living
- Maisonette

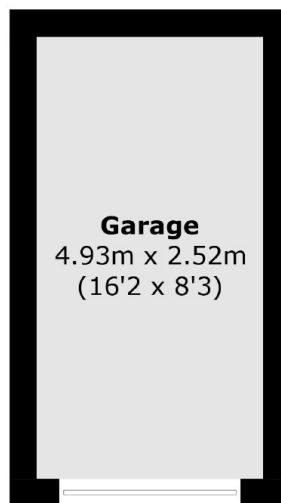
# St. Marks Road, Teddington, TW11



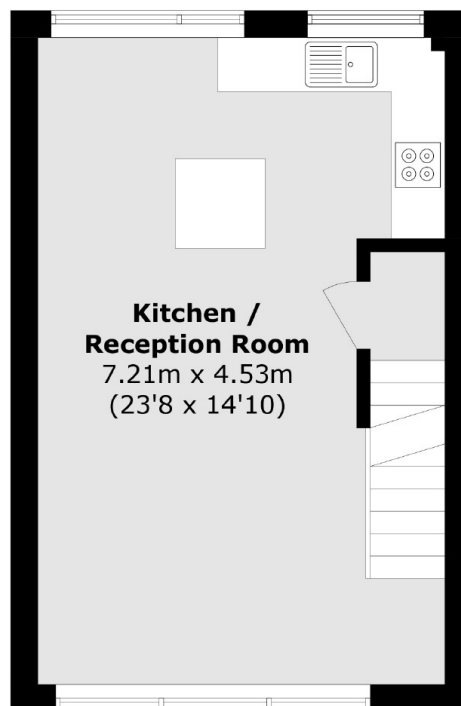
**Second Floor**



**Ground Floor**



**(Not Shown In Actual  
Location / Orientation)**



**First Floor**

Total area (approx.): 67.1 sq. m (722.2 sq. ft)  
Garage (approx.): 12.4 sq. m (133.5 sq. ft)