



Springfield Road, TW11
£999,950

Dexters



Springfield Road, TW11

This stunning Victorian house is located in central Teddington close to all the local amenities. The house is well presented and offers three double bedrooms and two bathrooms.

Entering the house into a beautiful bright reception room which has a pretty fireplace, fitted alcove cupboards with floating shelves and recently updated oak flooring throughout the ground floor. This room opens into the kitchen/dining room which is an excellent space for a family or entertaining. The kitchen has light grey units with a large bar area and has recently been fitted with Neff appliances and Quartz worktops. This then leads out onto the garden which has been laid to lawn, has a patio seating area and is larger than most on the road.

Upstairs, the first and second floors have also had newly fitted carpets throughout. On the first floor there are two double bedrooms and a family bathroom, the top floor has a master bedroom with an en suite shower room and fitted wardrobes creating excellent storage.

Springfield Road is off Field Lane which is a quiet yet central location. Teddington mainline station is within easy reach, as is the High Street with shops, bars and restaurants. Bushy Park and The River Thames are close by and school catchment is excellent.

Features

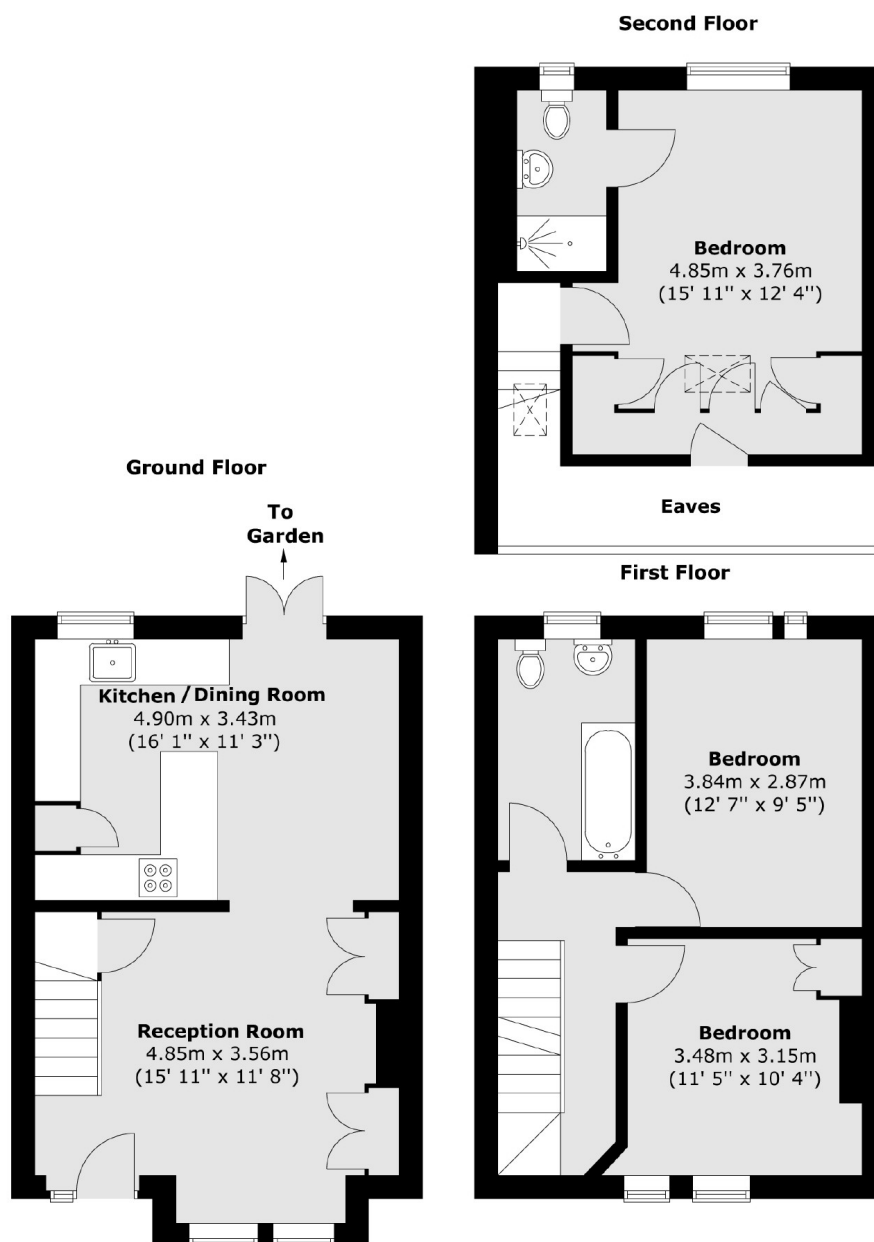
- Victorian
- Three Double Bedrooms
- Two Bathrooms
- Central Location
- Excellent Decorative Order
- Secluded Garden







Springfield Road, Teddington, TW11



Total area (approx.) : 93.9 sq. m (1011 sq. ft)