



Langdon Park, TW11

£659,950

Dexters



Langdon Park, TW11

Set within the stunning grounds of the Normansfield Court development this detached house has gated parking and a private garden. This property will be available with vacant possession and you are able to move straight in.

From the front door you enter into a hallway and through into a large reception room with a dining area. There are dual aspect windows and a set of French doors which lead onto the garden.

There is a modern kitchen with integrated appliances and a side door. In addition there is a shower room to the ground floor and additional storage. Upstairs there are two double bedrooms, both rooms have fitted storage and the master has an en suite.

The garden is laid to lawn and there is a private parking space accessed through an electric gate. The development offers stunning grounds.

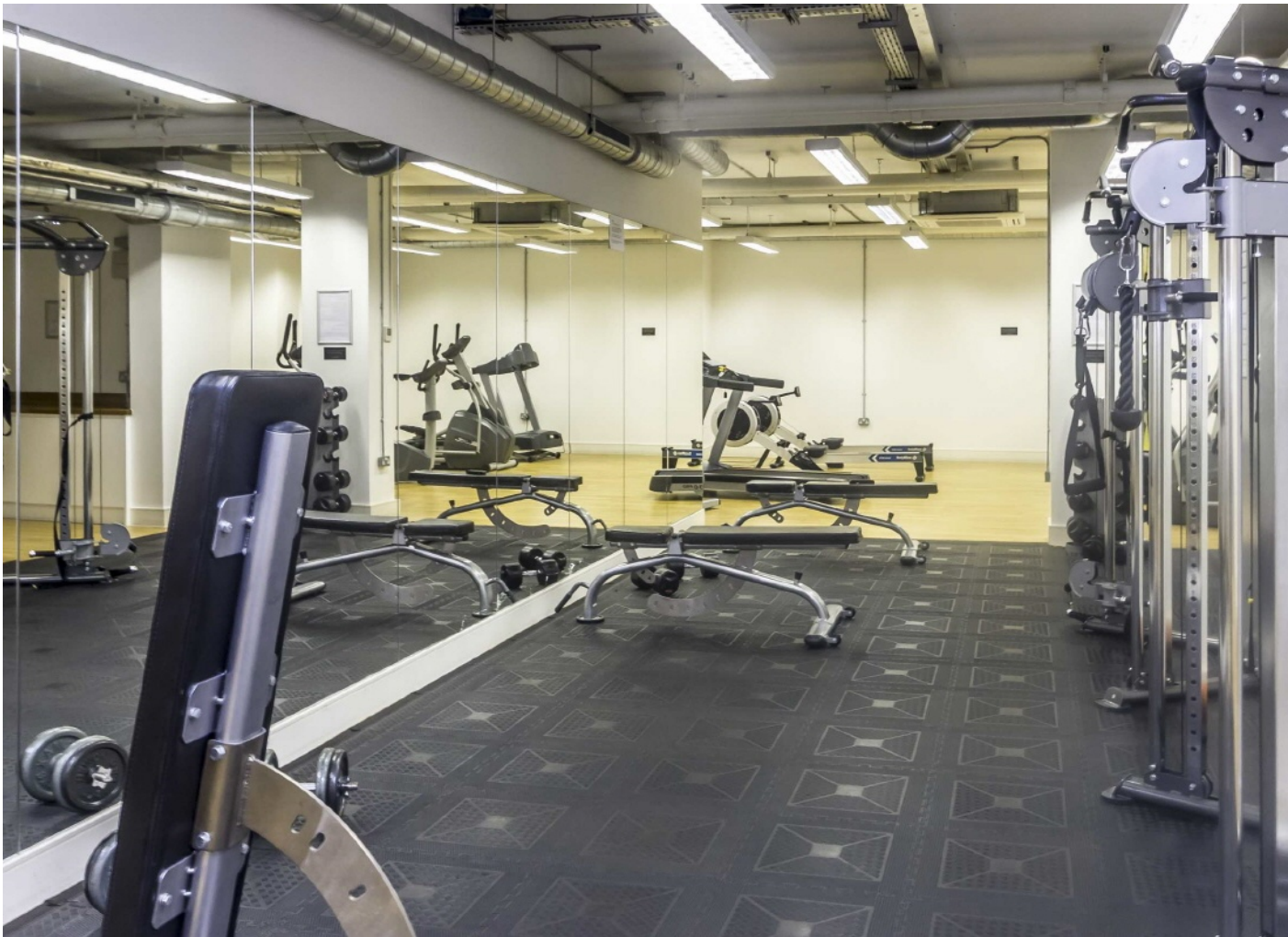
The location will sell itself. A short walk to Hampton Wick station with a direct link to Waterloo. Bushy Park, Kingston shopping centre and Riverside are all close by with lots of shops, restaurants and bars.

Features

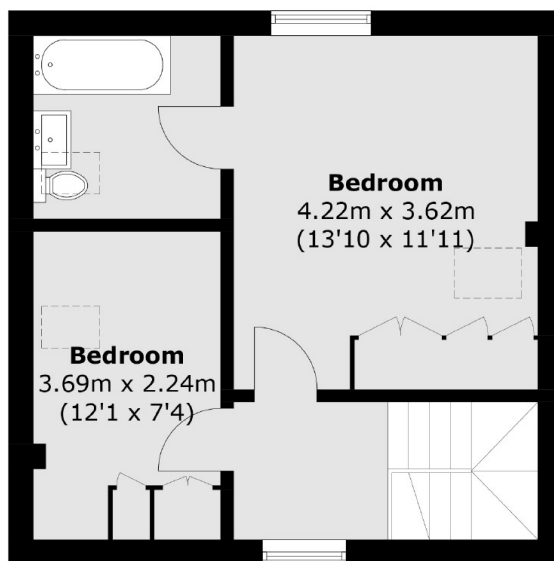
- Two Bedrooms
- Two Bath/Shower Rooms
- Parking
- Private Garden
- Excellent Location
- Potential To Extend (STPP)



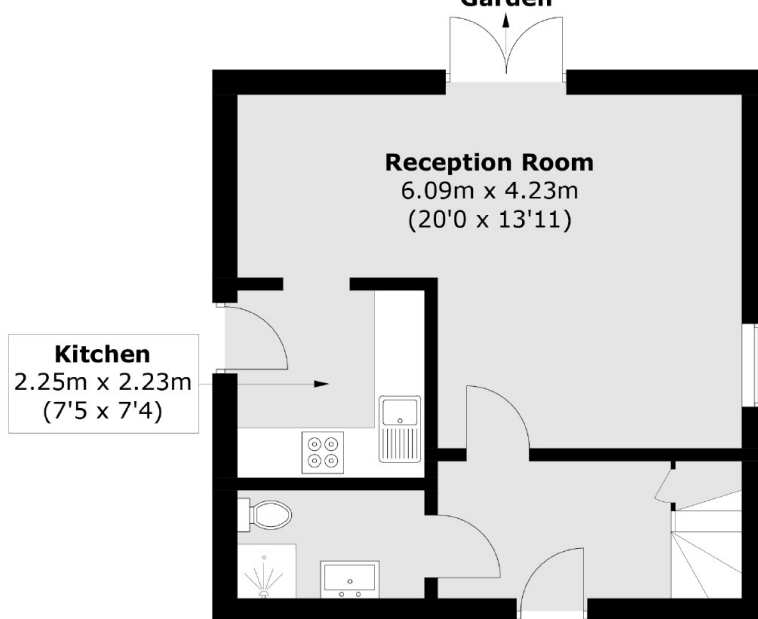




Langdon Park, Teddington, TW11



First Floor
To
Garden



Ground Floor

Total area (approx.): 73.7 sq. m (793.3 sq. ft)

Dexters

Teddington
61 High Street
Teddington
TW11 8HA
Sales
020 8288 8288

Energy Rating: C. We aim to make our particulars both accurate and reliable. However they are not guaranteed; nor do they form part of an offer or contract. If you require clarification on any points then please contact us, especially if you're traveling some distance to view. Please note that appliances and heating systems have not been tested and therefore no warranties can be given as to their good working order.

 **RICS** | Regulated
Estate Agent
and Letting Agent

[dexters.co.uk](https://www.dexters.co.uk)