



Harrowdene Gardens, TW11
£335,000

Dexters



Harrowdene Gardens, TW11

This exceptional top floor one bedroom apartment has been tastefully renovated by the current owners. The property is light and airy with stunning views.

The property is set in gorgeous communal grounds which are well maintained and the property also benefits from a garage and unallocated parking.

Entering the hallway, all rooms lead off. The reception room is beautifully decorated in neutral tones and has views over Bushy Park. The kitchen leads off and is fully fitted with a utility area. The bathroom has been recently fitted and the bedroom has fitted wardrobes. Additionally, there is loft access for extra storage.

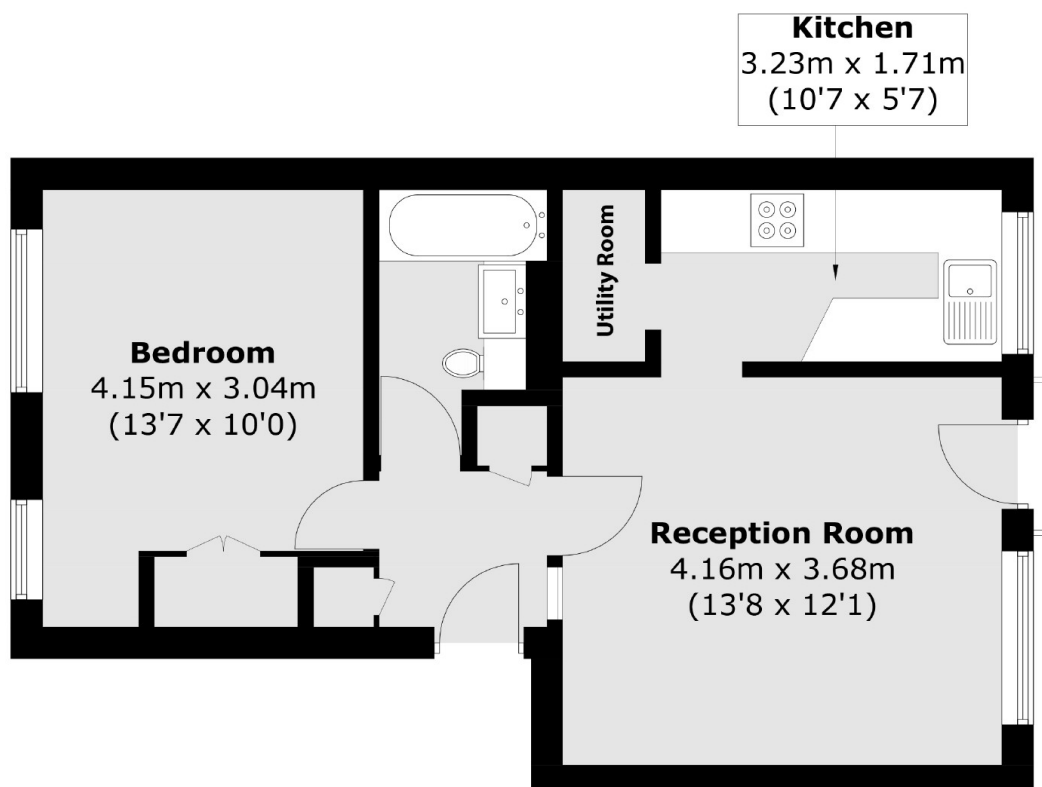
Harrowdene Gardens is off Sandy Lane, an excellent spot for transport, with a well lit private footpath directly leading to Teddington mainline station and Teddington High Street within minutes. Royal Bushy Park, Kingston town centre is within easy reach along with the River Thames.

Features

- Share Of Freehold
- One Bedroom
- Top Floor
- Garage
- Communal Gardens
- Excellent Condition



Harrowdene Gardens, Teddington, TW11



Total area (approx.): 43.4 sq. m (467.1 sq. ft)