



## Teddington Park, TW11

### £469,950

A beautifully presented first floor apartment located close to all amenities. There is a spacious lounge and two double bedrooms along with parking and communal gardens and no onward chain

Teddington Park is accessed from Waldegrave Road and Cambridge Road. Within easy reach of Teddington High Street and Teddington mainline station.

### Features

- No Onward Chain
- Two Double Bedrooms
- Long Lease
- Ample Parking
- Communal Gardens
- South Facing



## Teddington Park, TW11

Enter into the hallway which offers ample space for coats and shoes. This apartment offers bright and spacious accommodation throughout with two generous double bedrooms.

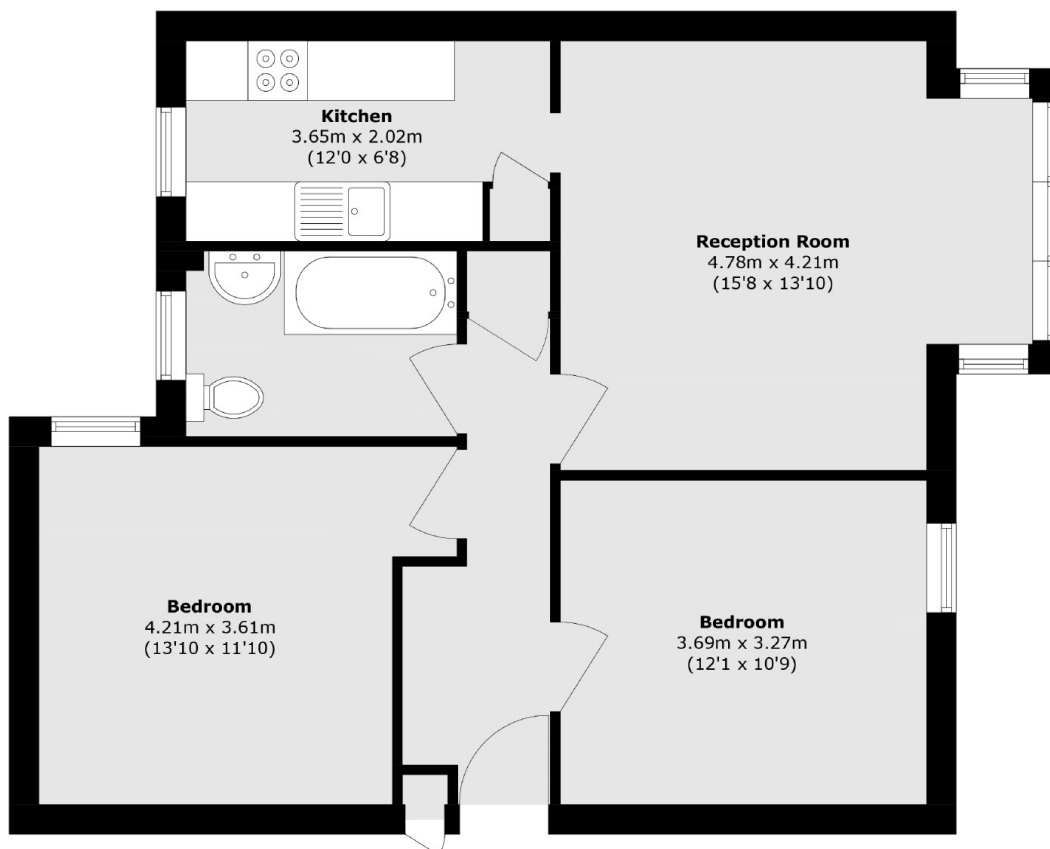
The 15ft reception room which is south facing offers plenty of space as a lounge with room to also dine and leads through to the kitchen. The kitchen has space for all appliances and a large storage cupboard. Completing the apartment there is a bathroom with Aqualisa shower over the bath and additional storage in the hallway.

Surrounding the building there are communal gardens and to the rear of the property there is ample parking.





# Teddington Park, Teddington, TW11



Total area (approx.): 65.3 sq. m (702.8 sq. ft)

External cupboard (approx.): 0.1 sq. m (1.0 sq. ft)