



High Street, TW11

£339,999

Set in the heart of Teddington, this spacious top floor mansion flat is in excellent order throughout and the perfect position to enjoy all that Teddington has to offer including the River Thames and Bushy Park.

Teddington High Street is close to the River Thames and Bushy Park. The High Street is full of independent boutiques and High Street retailers. Teddington mainline station is within easy reach for transport into London.

Features

- Two Double Bedrooms
- No Onward Chain
- Central Location
- Private Garden
- Excellent Condition
- Long Lease



High Street, TW11

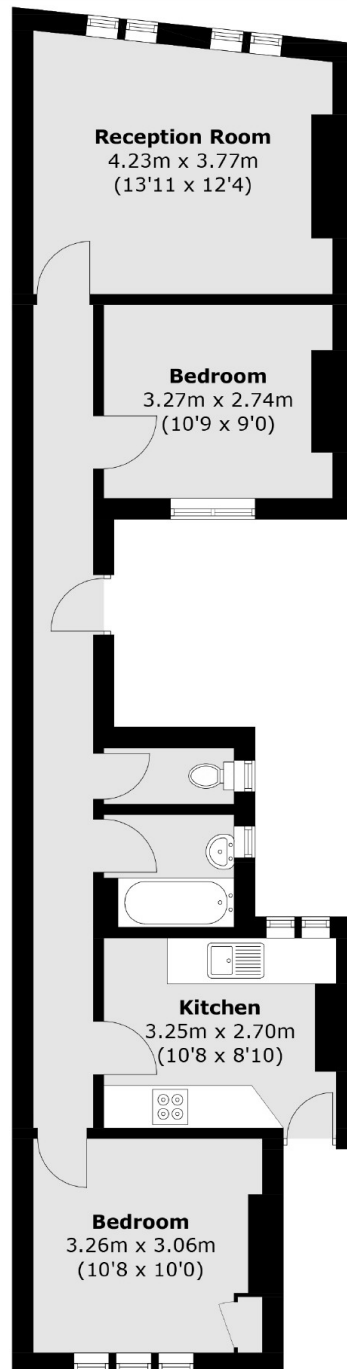
Enter into the hallway that offers access from the corridor into all rooms. The reception room is flooded with natural light and is situated at the front of the apartment.

Both the bedrooms are generous doubles and offer fitted storage, the master bedroom is located at the rear of the building and the second bedroom in the middle. The modern kitchen/breakfast room has shaker style units and integrated appliances with space to dine. In addition there is a modern bathroom.

From the kitchen there is access to the private garden at the rear of the building. A perfect spot for some sunshine and entertaining.



High Street, Teddington, TW11



Total area (approx.): 60.3 sq. m (649.1 sq. ft)