



Royal Road, TW11

£995,000

Dexters



Royal Road, TW11

Located in the popular "Royal Roads" this Victorian end of terrace home is presented in immaculate order throughout with a secluded rear garden. There is potential to extend (STPP).

Entering into the ground floor there is a spacious double reception room. This room offers plenty of natural light with high ceilings, cornicing and a feature fireplace. To the rear of the house there is a kitchen/breakfast room leading to the garden designed in a shaker style with space for all appliances. From the kitchen there is access to a dining room linking the two rooms together creating a sociable family space.

To the first floor there are three generous double bedrooms and a bathroom. This home can lend itself to future potential by way of building into the loft which so many houses have done.

From the garden there is side access to the front of the house. The garden is beautiful and easy to maintain but is secluded with mature plants a quiet tranquil space to enjoy.

Royal Road is located a short walk from Teddington Broad Street, Teddington and Fulwell mainline stations plus there is easy access to Bushy Park.

Features

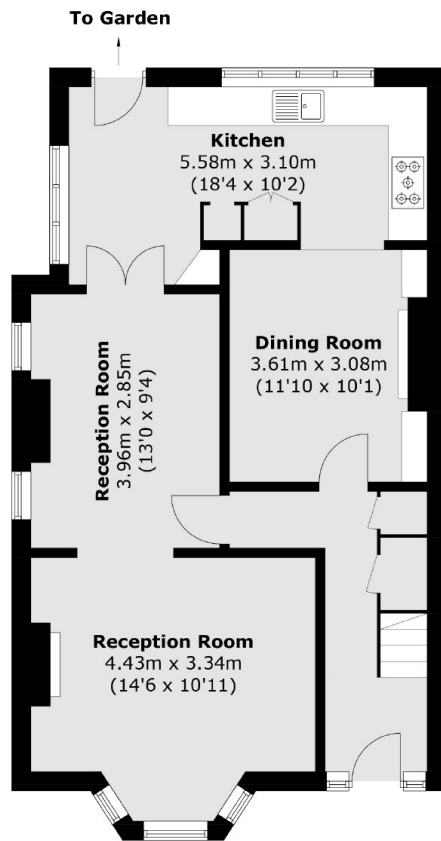
- End Of Terrace
- Three Bedrooms
- Side Access
- Period Features
- Excellent School Catchment
- Secluded Garden



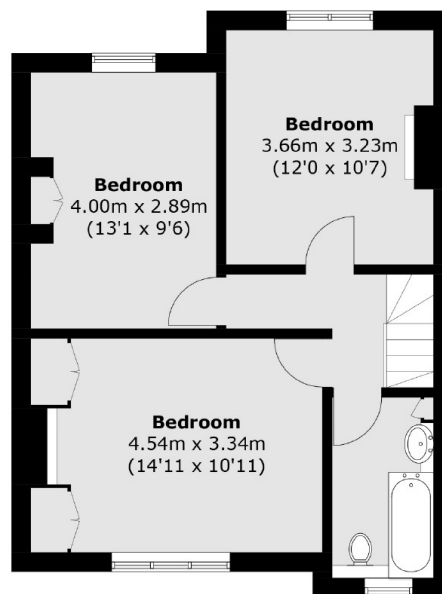




Royal Road, Teddington, TW11



Ground Floor



First Floor

Total area (approx.): 115.4 sq. m (1,242.1 sq. ft)