



Victor Road, TW11

£995,000

A beautifully presented, four bedroom, semi-detached, Victorian property, with south-facing garden on a highly sought after road.

Victor Road is a turning off Stanley Road. This location is popular for schools, transport links into London, Bushy Park and The River Thames. Teddington High Street is also within easy reach.

Features

- Period Property
- Four Bedrooms
- Two Bathrooms
- No Onward Chain
- End Of Terrace
- South Facing Garden



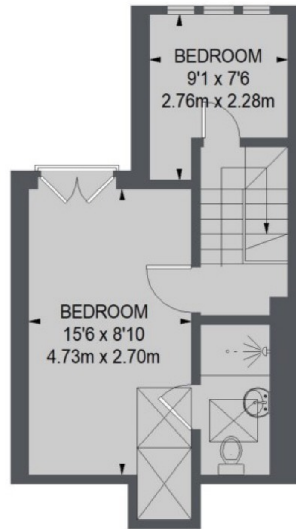
Victor Road, TW11

The ground floor is intelligently laid out with a family room to the front complete with wood burning stove, a spacious open-plan kitchen and dining area to the rear. Further benefits are the modern engineered flooring with underfloor heating.

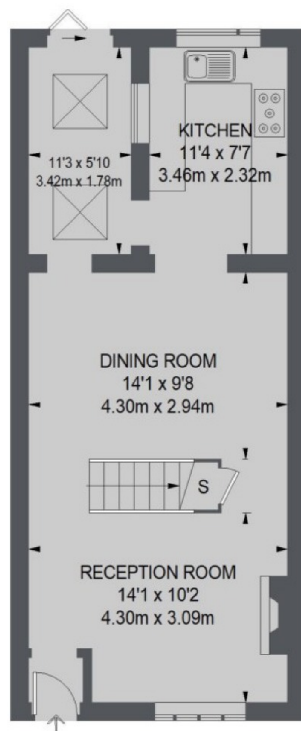
The landscaped south-facing garden is accessed via pretty french doors and the property further includes four bedrooms, three of which are doubles, two bathrooms and additional built in storage over the top two floors.



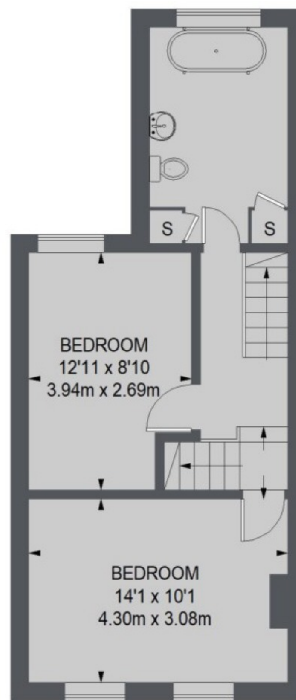
Victor Road, Teddington, TW11



SECOND FLOOR



GROUND FLOOR



FIRST FLOOR

TOTAL APPROX. FLOOR AREA 1234 SQ. FT. (114.65 SQ. M.)