



Blagrove Road, TW11

£595,000

This gorgeous second floor apartment is one of the few in the development that boasts uninterrupted views of the Royal Bushy Park. The owners live immaculately and it's really stylish throughout with a wrap around balcony and allocated parking.

Located off Blagrove Road in Teddington with Bushy Park on your doorstep and a short walk to Kingston's shops, the property is excellently located for all amenities.

Features

- Two Double Bedrooms
- Two Bathrooms
- Wrap Around Balcony
- Lift Service
- Views Over Bushy Park
- Allocated Parking



Blagrove Road, TW11

You enter the apartment into the hallway where there is a smartly designed storage cupboard used as a utility closet.

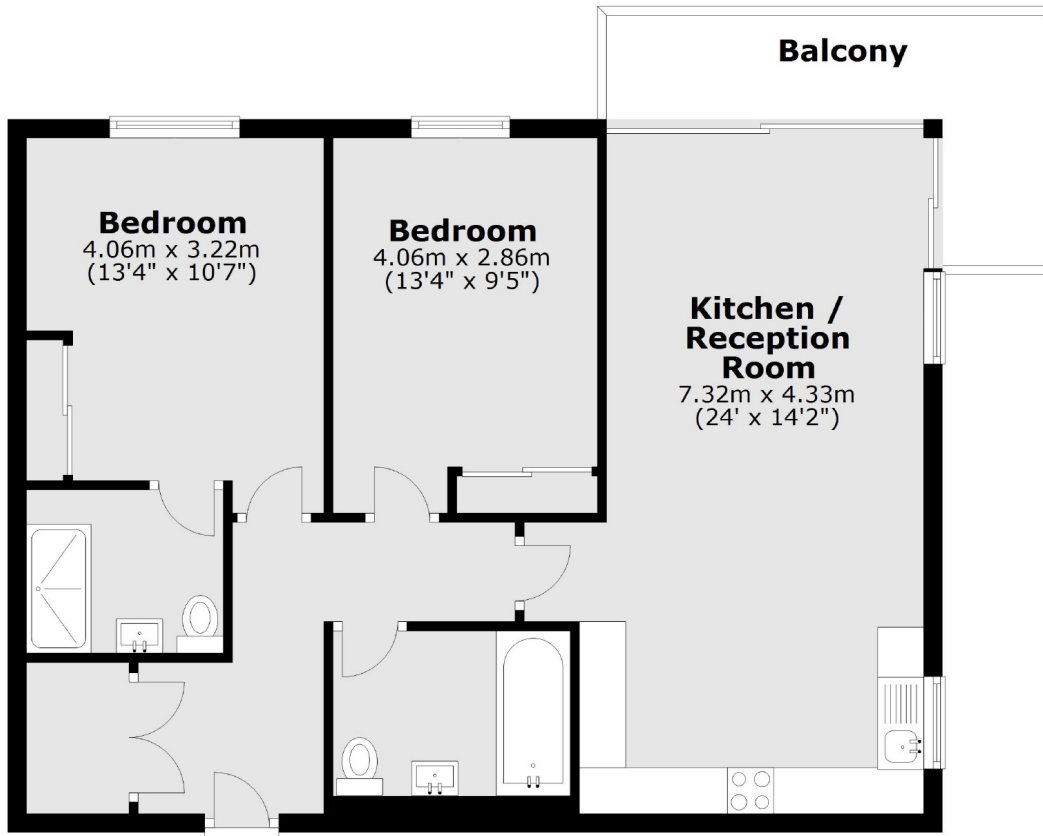
The wow factor is when you enter the open plan kitchen/reception which is a fantastic space to relax and socialise, with direct access onto a wrap around south west facing balcony that has stunning views over Bushy Park. The kitchen is in immaculate condition with integrated appliances and further benefit of a new breakfast bar.

The property has two double bedrooms, both with fitted wardrobes and the master bedroom has an en suite with additional storage. Additionally there is lift access in the building along with allocated underground parking and pristine communal gardens.



Blagrove Road, Teddington, TW11

Second Floor



Total area: approx. 71.1 sq. metres (765.3 sq. feet)