



High Street, TW11
£385,000

Dexters



High Street, TW11

You cannot beat this location being in the heart of Teddington with access to Teddington High Street and transport links. This luxury apartment also has lift access and is immaculately presented throughout.

Built with a very high specification including double glazing, ample storage, gas central heating, flat panel radiators, quality flooring, video entry system, lift access and a ground floor allocated parking space with a separate useful storeroom. This apartment offers over 600 sq ft.

The large reception room offers lots of space to relax and dine with plenty of natural light and opens onto the kitchen to create a sociable living space. The hand painted kitchen includes integrated 'Siemens' appliances. The bathroom is larger than average, fully tiled with additional fitted storage and a separate shower cubicle. The large 14ft double bedroom has double wardrobes.

Park House is located off Teddington High Street, well located for Teddington Mainline Station, The River Thames and Royal Bushy Park.

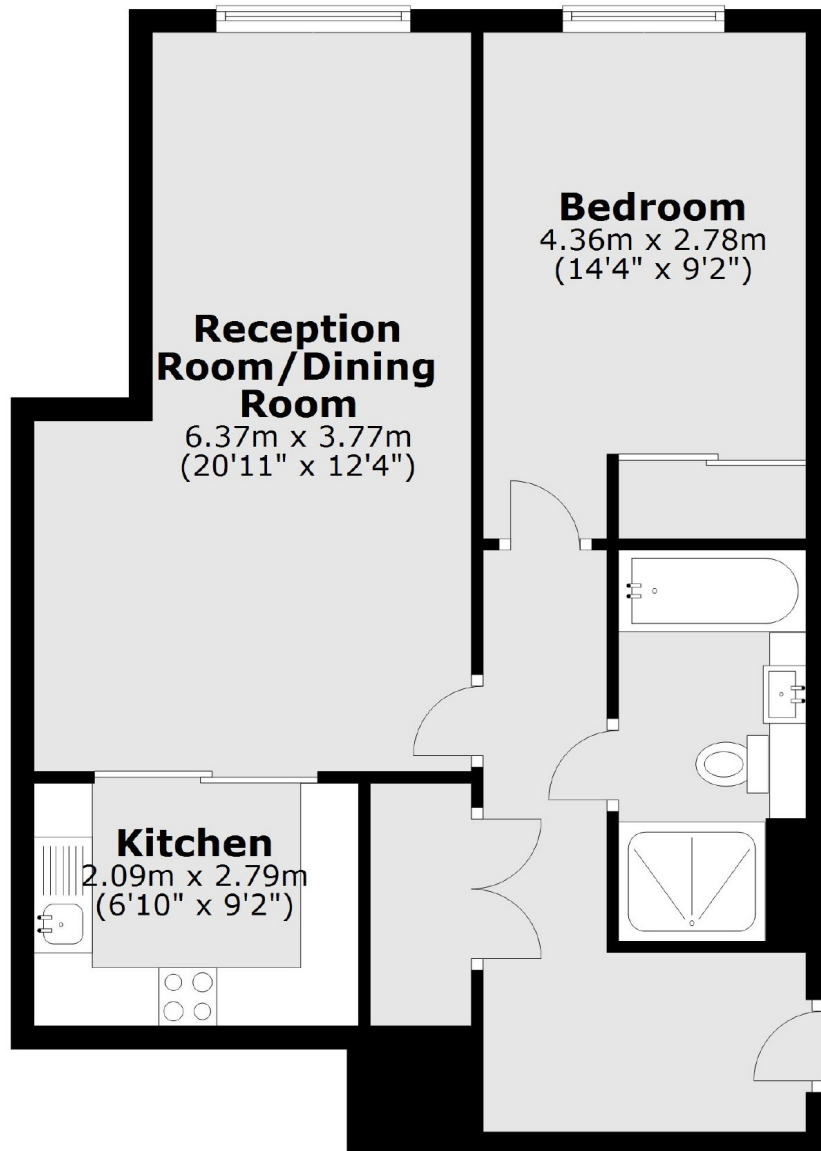
Features

- Central Location
- Allocated Parking
- Lift Access
- Ample Storage
- 20ft Reception Room
- Modern Fitted Kitchen



High Street,
Teddington, TW11

Third Floor



Total area: approx. 56.9 sq. metres (612.8 sq. feet)