



Gloucester Road, TW11

£3,350 Per calendar month

Dexters



Gloucester Road, TW11

This exceptional and superbly proportioned flat, boasts over 1000sq ft of flexible space in an impressive detached period building. Located well for transport links and school catchment, this is a must view.

This wonderful first floor apartment has a modern fully fitted kitchen with a full-size American fridge freezer, a spacious reception room with ample space for entertaining and is furnished with a large corner sofa and dining table. The welcoming entrance hall has ample storage.

There are three double bedrooms, the master bedroom has a bay window overlooking the communal gardens and fully fitted floor to ceiling wardrobes. The second bedroom has a feature fireplace and sash windows throughout in keeping with the character of the property.

Outside there is a large communal garden which is a real sun trap, this apartment has its own summer house/shed in the garden which is ideal for storing bikes and all the garden essentials. The property is offered fully furnished.

Gloucester Road is close to Teddington mainline station and Teddington High Street full of shops/bars and restaurants. The River Thames is easy to reach and this is an excellent spot for schools.

Features

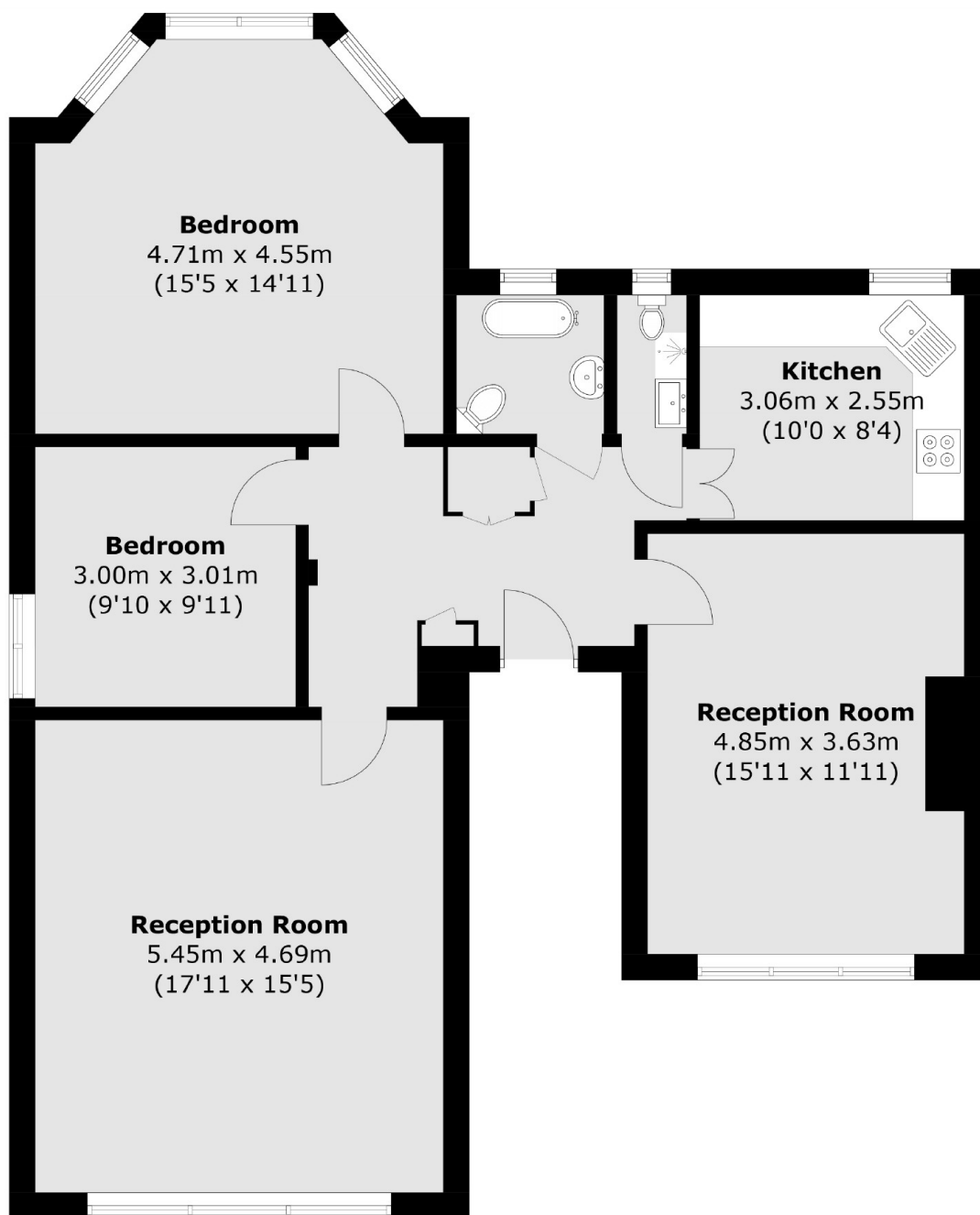
- Excellent Location
- Three Double Bedrooms
- Over 1,000sqft Of Living Space
- Great Condition Throughout
- High Ceilings
- Communal Gardens







Gloucester Road, Teddington, TW11



Second Floor

Total area (approx.): 97.5 sq. m (1049.5 sq. ft)