



Gloucester Road, TW11

£3,495 Per calendar month

Dexters



Gloucester Road, TW11

This exceptional and superbly proportioned flat, boasts over 1000sq ft of flexible space in an impressive detached period building. Located well for transport links and school catchment, this is a must view.

Gloucester Road is a turning off Hampton Road. Close to Teddington mainline station and Teddington High Street full of shops/bars and restaurants. The River Thames is easy to reach and this is an excellent spot for schools.

Features

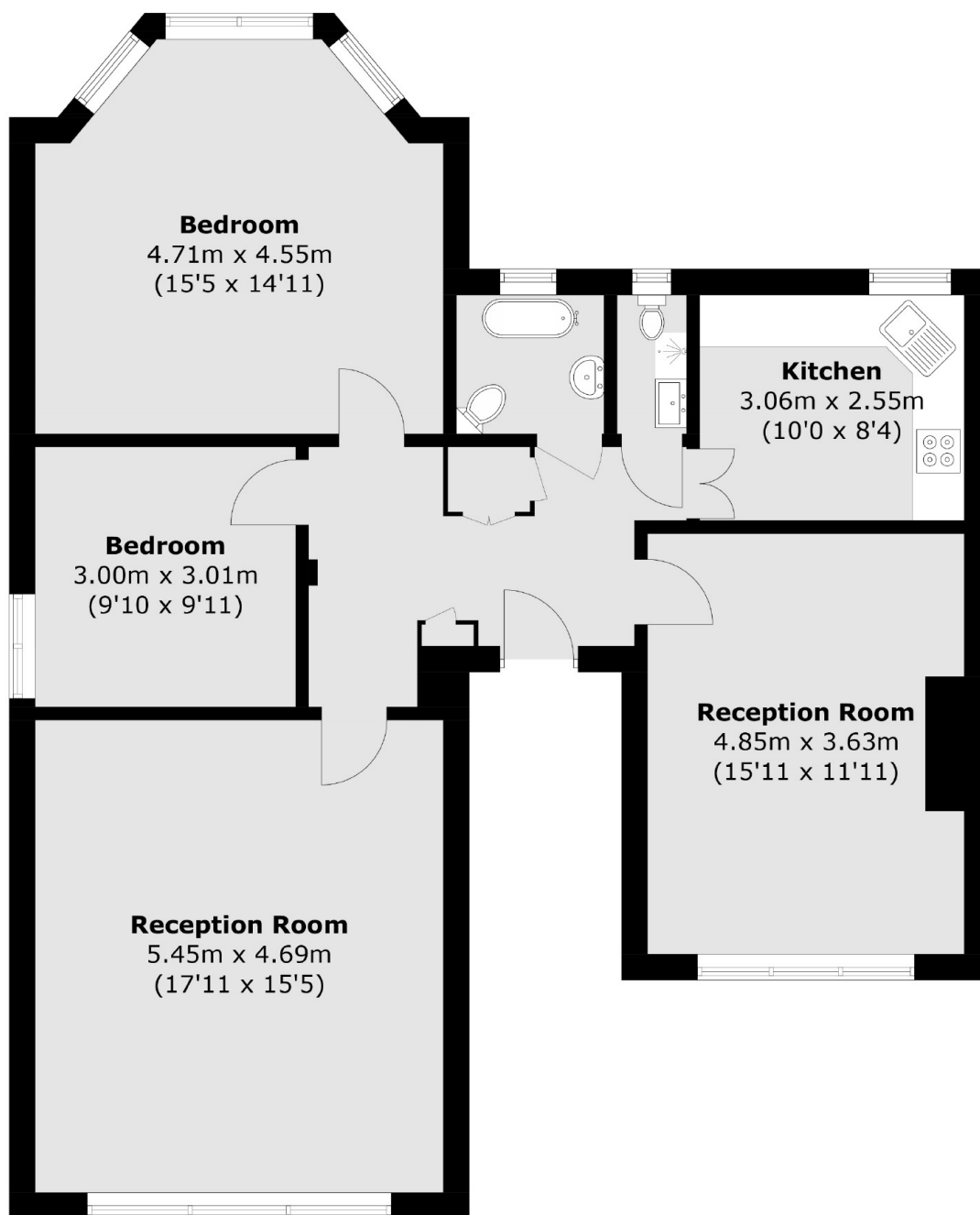
- Excellent Location
- Three Double Bedrooms
- Over 1,000sqft Of Living Space
- Great Condition Throughout
- High Ceilings
- Communal Gardens







Gloucester Road, Teddington, TW11



Second Floor

Total area (approx.): 97.5 sq. m (1049.5 sq. ft)