



York Road, TW11

£895,000

Located in this popular road finished to a high specification and stylish throughout, this Victorian home is offered with no onward chain; a must view!

York Road is excellent for school catchment, primary and secondary. Close to Teddington mainline station, Bushy Park and The River Thames. Teddington High Street is within easy reach.

Features

- Victorian
- Four Bedrooms
- South Facing Garden
- Stylish Finish
- Plantation Shutters
- Excellent Location



York Road, TW11

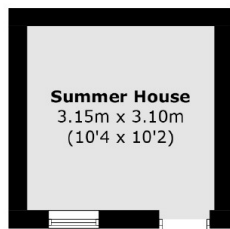
With over 1000sq ft this home offers a front reception room with modern herringbone floor and opens into the rear of the property. Altogether the second living area, kitchen/breakfast room offers 26ft. The kitchen is stylish in a shaker style with bi folding doors leading onto the garden. The ground floor is light and airy throughout. Completing the ground floor there is a cloakroom.

Over the first and second floor there are four bedrooms. The principle bedroom to the top floors feels like a boutique hotel with a luxury finish, roll top bath and storage. In addition to the first floor there is an additional shower room.

There is a lovely South facing garden to the rear with a large lawn and summer house.

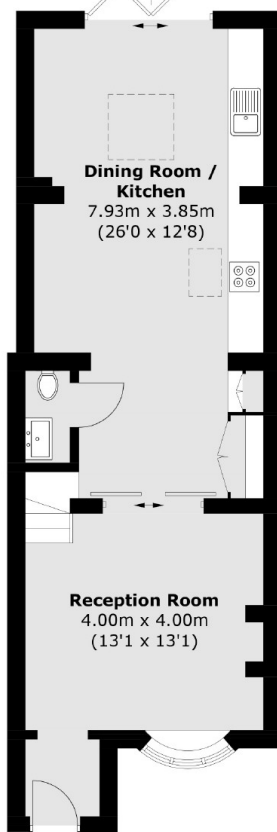


York Road, Teddington, TW11

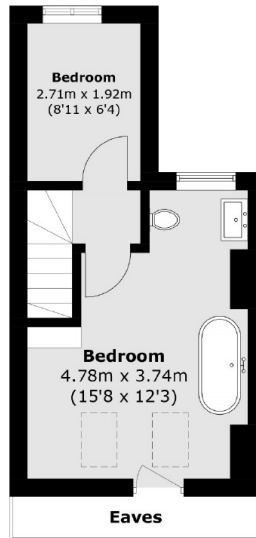


(Not Shown In Actual
Location / Orientation)

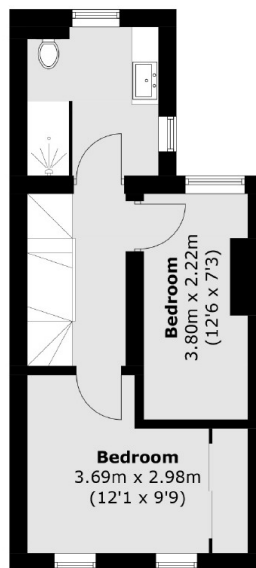
To Garden



Ground Floor



Second Floor



First Floor

Total area (approx.): 100.5 sq. m (1,081.9 sq. ft)
(Excluding Eaves)

Summer House (approx.): 9.9 sq. m (106.6 sq. ft)