



High Street, TW11

£399,950

Set in the heart of Teddington, this top floor mansion flat is in immaculate order and the perfect position to enjoy all that Teddington has to offer including the River Thames and Bushy Park.

Teddington High Street is close to the River Thames and Bushy Park. The High Street is full of independent boutiques and High Street retailers. Teddington mainline station is within easy reach for transport into London.

Features

- Two Double Bedrooms
- Central Location
- Well Presented
- Period Features
- Top Floor
- High Ceilings



High Street, TW11

This apartment has an excellent layout. The reception room has built in bookshelves, stripped floors and three large windows bringing in plenty of natural light. There is a feature fireplace with gas fire and high ceilings.

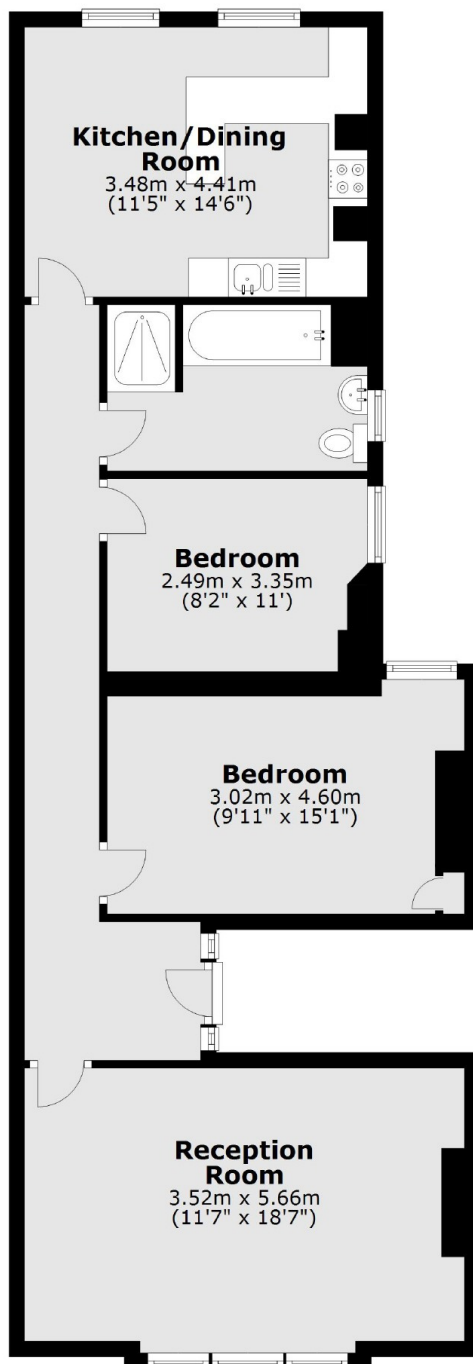
There are two double bedrooms and a bathroom with a separate shower and bath. The kitchen has plenty of space to dine as well as space for all appliances.

In addition there is more storage in the hallway and the bathroom. There are period features throughout this property.



High Street, Teddington, TW11

Third Floor



Total area: approx. 78.5 sq. metres (844.9 sq. feet)