



Park Road, KT1

£375,000

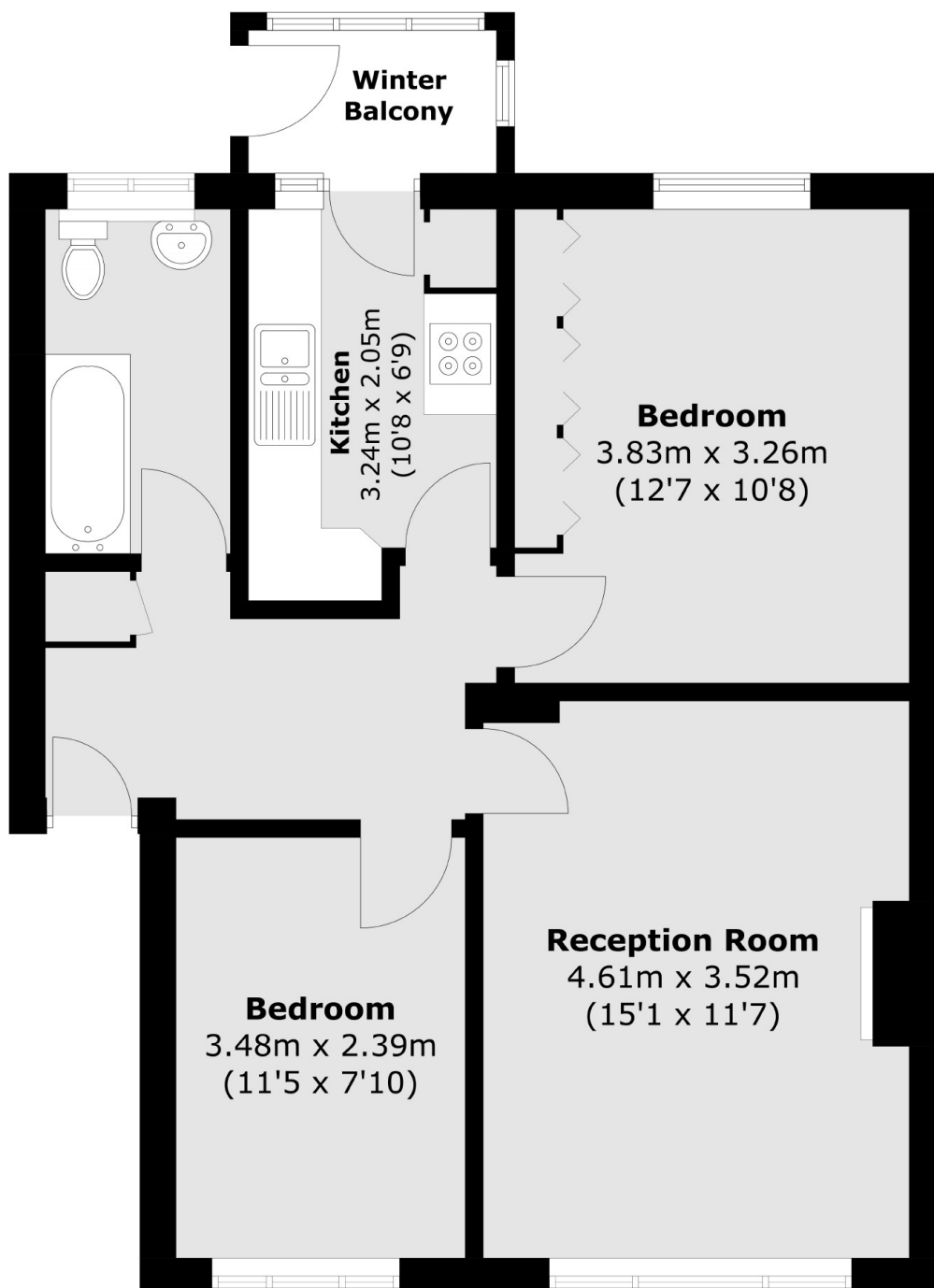
We are delighted to offer this purpose built two bedroomed flat situated within these lovely communal grounds. The flat is on the top floor and has two bedroom, parking and access to the beautiful gardens.

Park Court is located off Park Road, with easy access to Hampton Wick mainline station and a quarter of a mile from Kingston town centre and next to Bushy Park.

Features

- Top Floor
- No Onward Chain
- Two Double Bedrooms
- Parking
- Stunning Communal Gardens
- Next To Bushy Park

Park Road, Kingston Upon Thames, KT1



Total area (approx.): 58.1 sq. m (625.4 sq. ft)
Winter Balcony: 2.4 sq. m (25.8 sq. ft)

Dexters

Teddington
61 High Street
Teddington
TW11 8HA

Sales
020 8288 8288

Energy Rating: C. We aim to make our particulars both accurate and reliable. However they are not guaranteed; nor do they form part of an offer or contract. If you require clarification on any points then please contact us, especially if you're traveling some distance to view. Please note that appliances and heating systems have not been tested and therefore no warranties can be given as to their good working order.

 **RICS** | Regulated
Estate Agent
and Letting Agent

dexters.co.uk