



Waldegrave Road, TW11

£409,950

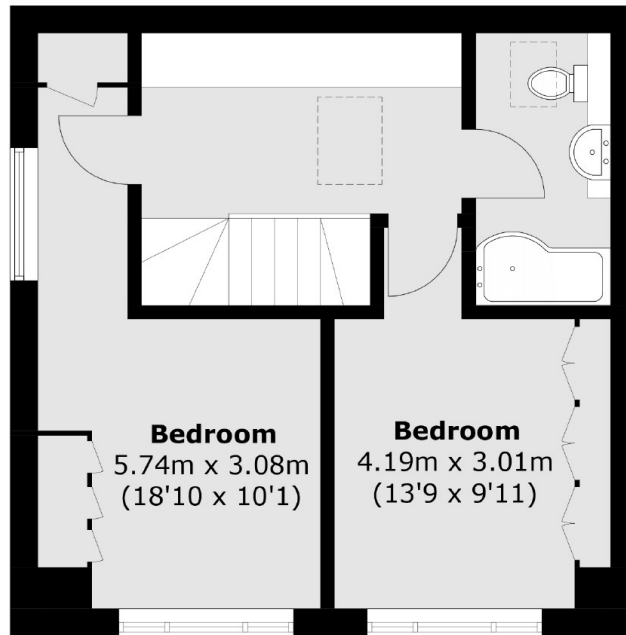
Internal photos to follow. Located in a popular location close to transport, shops, bars and restaurants this two bedroom split level apartment is a must view. There is a large reception room with modern kitchen along with off street parking.

Waldegrave Road is a turning off Teddington High Street with plenty of shops/bars and restaurants. A great position if you need transport links with Teddington mainline station close by and plenty of bus routes.

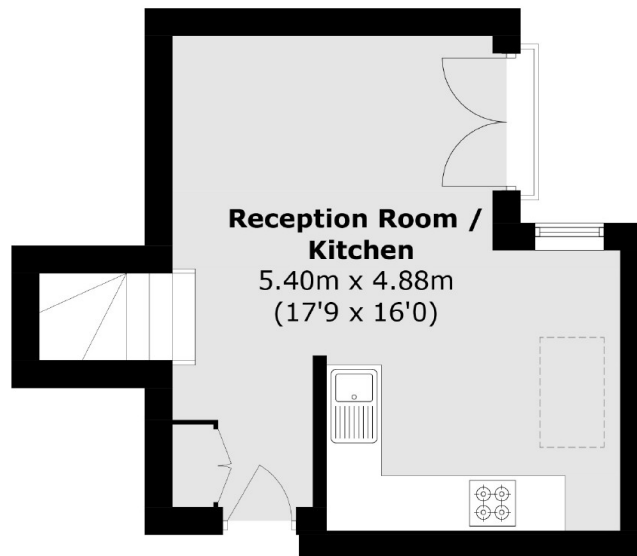
Features

- Share of Freehold
- Split Level
- No Onward Chain
- Two Double bedrooms
- Off Street Parking
- Ample Storage

Waldegrave Road, Teddington, TW11



Second Floor



First Floor

Total area (approx.): 63.6 sq. m (684.5 sq. ft)