



## Waldegrave Road, TW11

£409,950

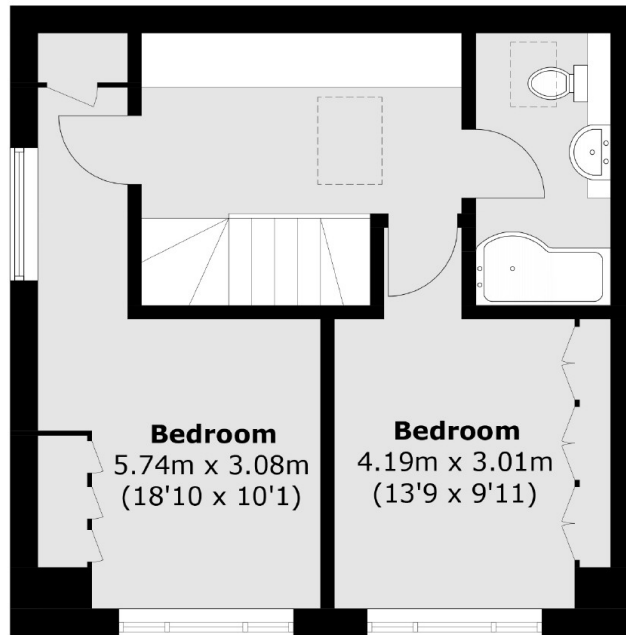
Internal photos to follow. Located in a popular location close to transport, shops, bars and restaurants this two bedroom split level apartment is a must view. There is a large reception room with modern kitchen along with off street parking.

Waldegrave Road is a turning off Teddington High Street with plenty of shops/bars and restaurants. A great position if you need transport links with Teddington mainline station close by and plenty of bus routes.

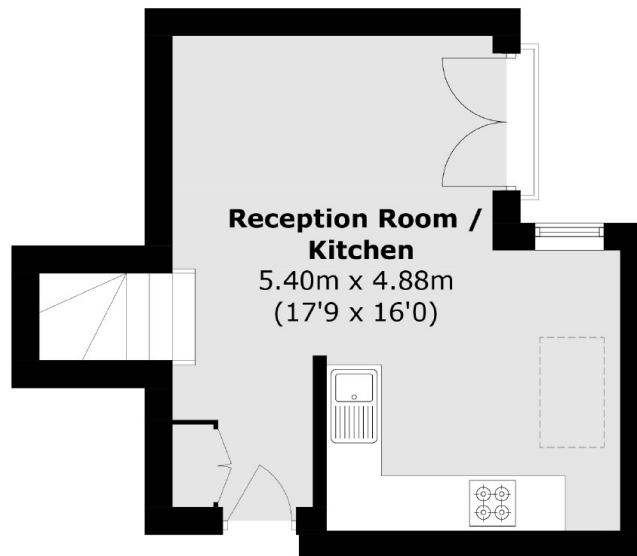
### Features

- Share of Freehold
- Split Level
- No Onward Chain
- Two Double bedrooms
- Off Street Parking
- Ample Storage

# Waldegrave Road, Teddington, TW11



**First Floor**



**Ground Floor**

Total area (approx.): 63.6 sq. m (684.5 sq. ft)