



**Walpole Road, TW11**

**£939,950**

**Dexters**





## Walpole Road, TW11

This stunning semi-detached house located in the heart of Teddington, you could not ask for more. Stylish throughout with three bedrooms, high end finishes and a secluded garden.

The current owners have cleverly designed this home to a high specification. To the front there is a formal reception room with a period style feature fireplace that has bespoke built in shelves and storage on either side.

The rear of the property continues to impress; the extension to the rear has created a second living space, a dining area, work space, new fitted utility room and a modern kitchen with a breakfast bar. The layout has been superbly thought out creating a sociable family living space leading on to the garden.

On the first floor there are two bedrooms with a stunning, newly fitted family bathroom. The second floor has a further bedroom with eaves storage.

Walpole Road is a quiet yet central location. Teddington mainline station is within easy reach, as is the High Street with shops, bars and restaurants. Bushy Park and The River Thames are close by and school catchment is excellent.

### Features

- Three Bedrooms
- Semi-Detached
- Stylish Finish
- Central Location
- Private Garden
- Excellent Position For Schools



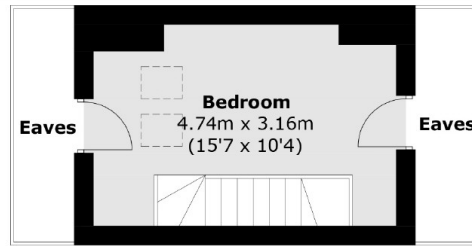




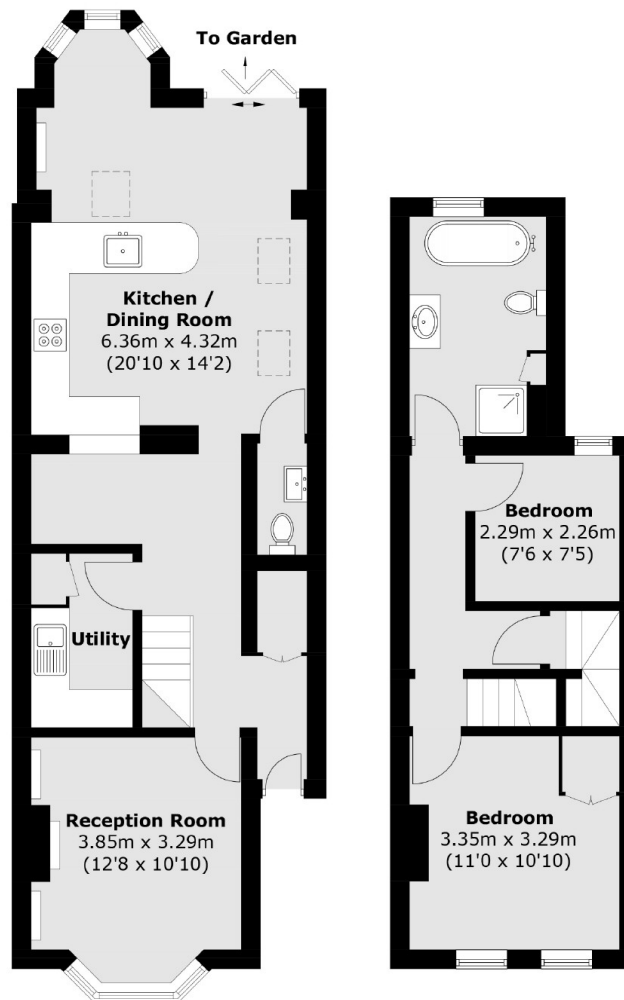




# Walpole Road, Teddington, TW11



**Second Floor**



**Ground Floor**

**First Floor**

Total area (approx.): 105.6 sq. m (1,136.7 sq. ft)  
(Excluding Eaves)