



Stanley Gardens Road, TW11

£875,000

This stunning Victorian home is designed and finished to a high standard as well as being located in a very popular part of Teddington, with three bedrooms, two bathrooms and presented in immaculate condition.

Stanley Gardens Road is excellent for school catchment, primary and secondary. Close to Teddington mainline station, Bushy Park and The River Thames. Teddington High Street is within easy reach.

Features

- Victorian
- Master Bedroom
- Built In Wardrobes
- Two Further Bedrooms
- Two Bath/Shower Rooms
- Ground Floor Cloakroom
- Landscaped Garden
- Under Floor Heating



Stanley Gardens Road, TW11

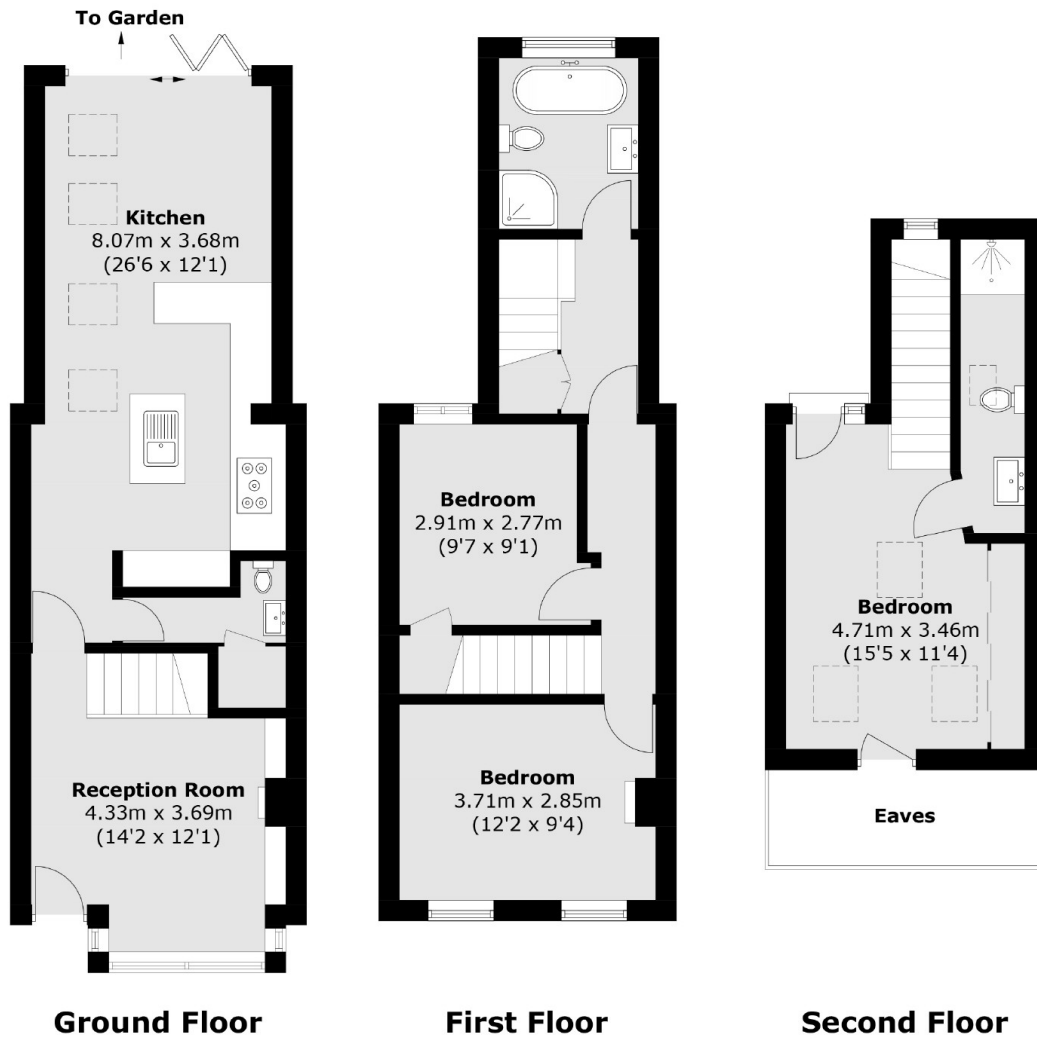
The ground floor extension has opened up the rear of the property creating a 27ft sociable living/kitchen/dining room. The smart kitchen has a central island, integrated appliances including a wine fridge and "Bosch" double ovens. There are bi-folding doors opening onto the garden.

The easy to maintain garden is secluded with rear access and artificial grass. Completing the ground floor there is a front reception room with a feature fireplace and plantation shutters in the bay window as well as a cloakroom with a large storage cupboard.

The first and second floors have been cleverly designed with two bedrooms on the first floor and a newly fitted luxury bathroom with a separate shower. The master bedroom on the top floor has bespoke wardrobes, a newly fitted en suite shower room and plenty of additional eaves storage. It further benefits from a Juliet balcony, a feature window and large skylights flooding the room with natural light and air.



Stanley Gardens Road, Teddington, TW11



Total area (approx.): 101.8 sq. m (1,095.7 sq. ft)
(Excluding Eaves)