



Rosebank Close, TW11

£399,950

Dexters



Rosebank Close, TW11

This ground floor apartment is situated in a central and popular location close to Teddington High Street and transport links. There is no onward chain and you can move straight in.

Enter into the hallway which leads through to a spacious reception room which is light and airy. There is plenty of space to relax and dine and from this room you enter into the kitchen. The kitchen is modern with shaker style units and space for appliances.

There are two double bedrooms and an updated modern family bathroom. Throughout there are wooden floors and storage within the hallway.

Rosebank Close is a modern development and there is an allocated parking space.

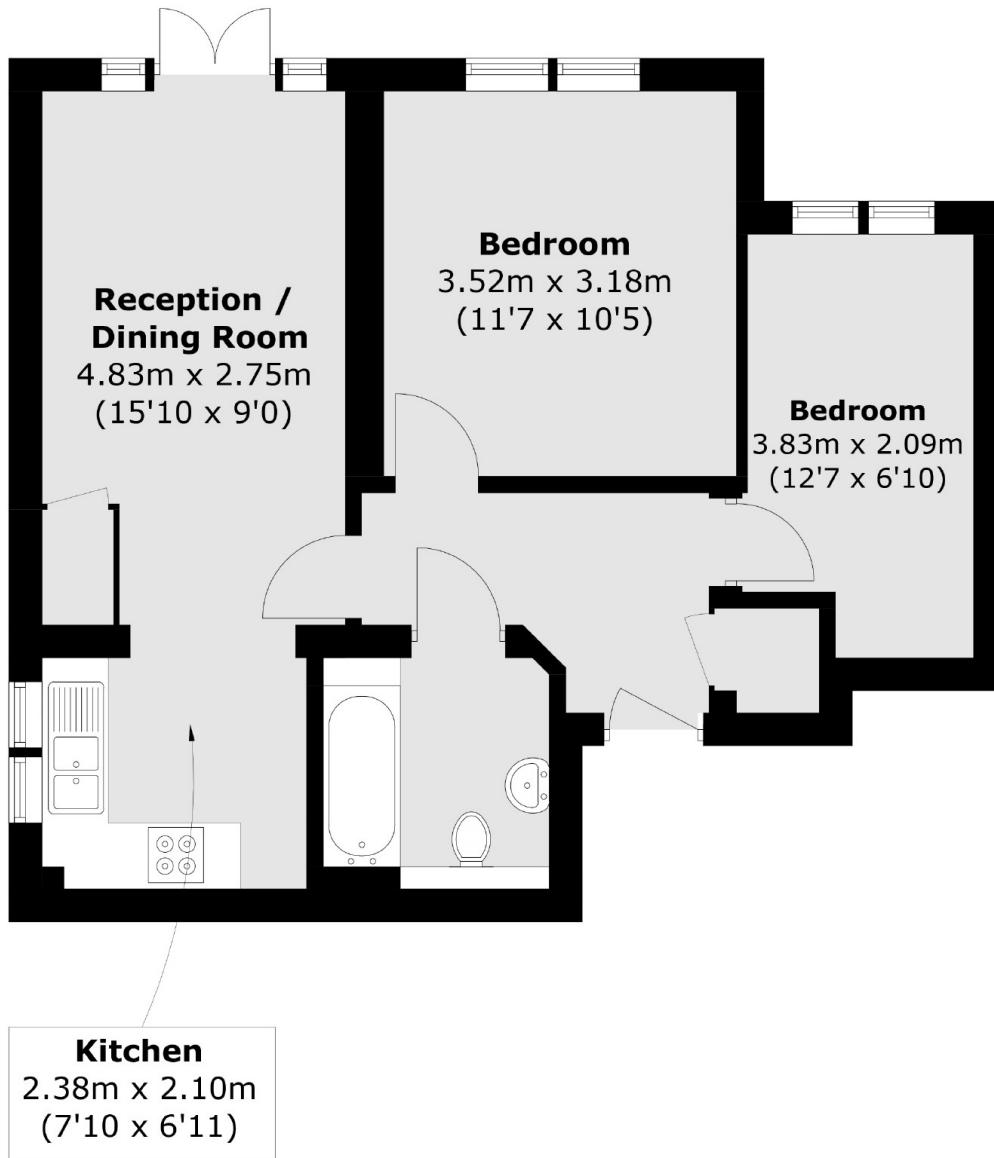
Rosebank Close is off Fairfax Road. Close to Teddington mainline station, Royal Bushy Park, Teddington High Street and the River Thames.

Features

- Ground Floor
- Modern Apartment
- Well Presented
- Excellent Location
- Allocated Parking
- No Onward Chain



Rosebank Close, Teddington, TW11



Total area (approx.): 51.9 sq. m (558.6 sq. ft)