



Hampton Road, TW11

£525,000

Dexters



Hampton Road, TW11

This ground floor apartment is offered with no onward chain, it is in beautiful condition throughout full of natural light, there is allocated parking and a communal roof terrace to enjoy.

Enter into the apartment into a bright and spacious reception room with high ceilings, bay window, wood floors. This room offers plenty of space for relaxing and dining and flows onto the kitchen. The sociable kitchen provides a central island and space for all appliance's.

There are two double bedrooms both of which offer fitted storage and an en suite; the master bedroom providing an en suite bathroom. Completing the accommodation there is an addition cloakroom and storage in the hallway.

From the first floor of the building there is access to the roof terrace to enjoy. To the rear of the property there is an allocated parking space and small communal garden. This development is private with an electronic gate to enter.

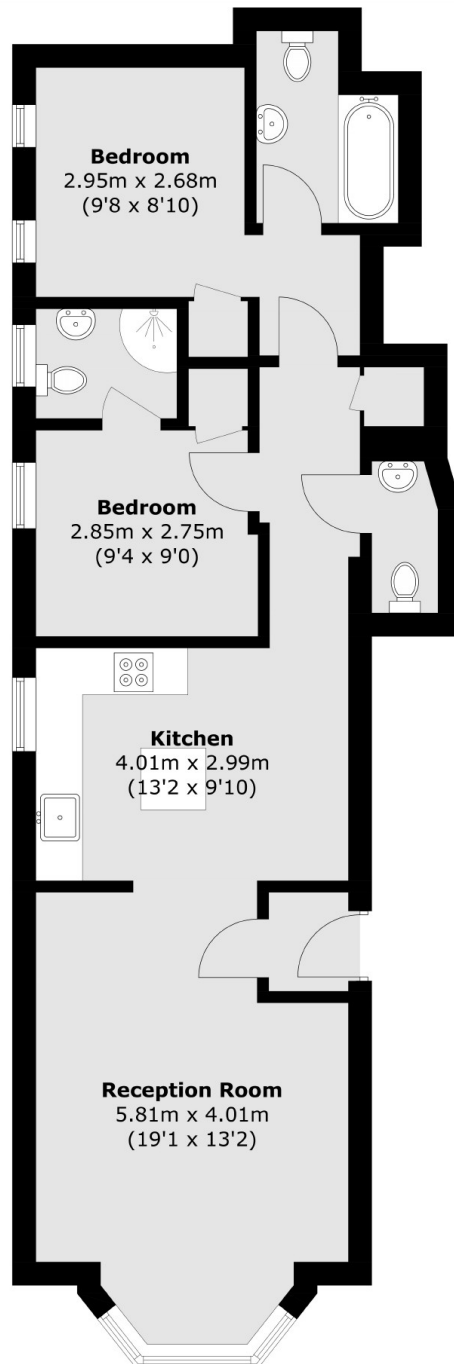
Hampton Road is excellent for transport links and if driving there is easy access to the M3. Both Hampton Hill and Teddington High Streets are easy to reach with shops and restaurants. Royal Bushy Park and the River Thames.

Features

- Two Double Bedrooms
- Two Bath/Shower Rooms
- Allocated Parking
- Gated Development
- No Onward Chain
- Excellent Location



Hampton Road, Teddington, TW11



Total area (approx.): 69.0 sq. m (742.7 sq. ft)