



Shacklegate Lane, TW11

£429,950

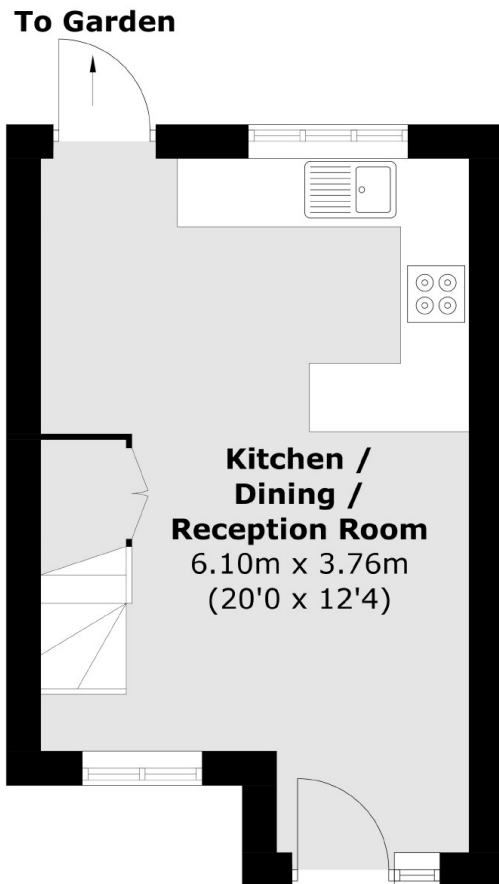
This one bedroom house is situated in a popular location, the property has been newly refurbished to an incredibly high standard. Boasting a pretty rear garden and off street parking to the front. Available with no onward chain. The reception is open to a stunning kitchen with a breakfast bar which leads onto pretty decked garden. Upstairs there is a study area, bedroom with fitted wardrobes and a bathroom with a freestanding bath.

Shacklegate Lane is perfectly located for transport with three stations in easy reach. Teddington High Street and Hampton High Street are close for shopping along with Bushy Park and The River Thames.

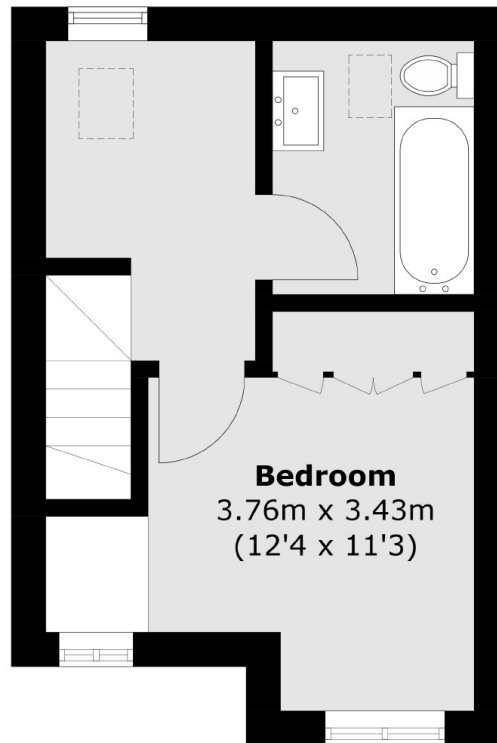
Features

- No Onward Chain
- Newly Refurbished
- Off Street Parking
- Private Garden
- One Bedroom
- Study Area

Shacklegate Lane, Teddington, TW11



Ground Floor



First Floor

Total area (approx.): 42.1 sq. m (453.1 sq. ft)