



Field Lane, TW11

£2,650 Per calendar month

Dexters



Field Lane, TW11

This charming two double bedroom Victorian family home is ideally located off Teddington High Street with a private garden and a kitchen/breakfast area along with a double reception room.

Field Lane is a turning from Teddington High Street. It is close proximity to Teddington mainline station, the River Thames and Bushy Park. It is an excellent location for the local schools.

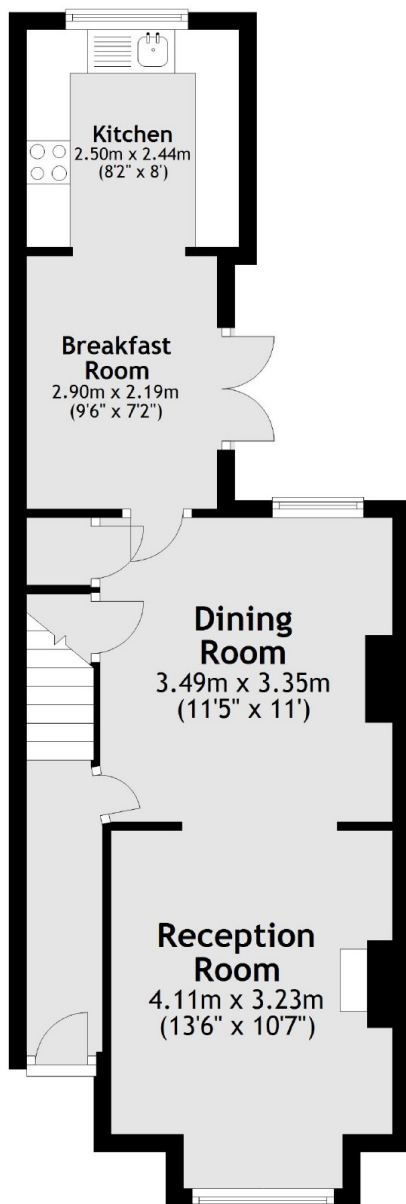
Features

- Stunning Victorian Home
- Two Double Bedrooms
- Spacious Reception Room
- Pretty Courtyard Garden
- High Street Location
- Modern Eat-In Kitchen

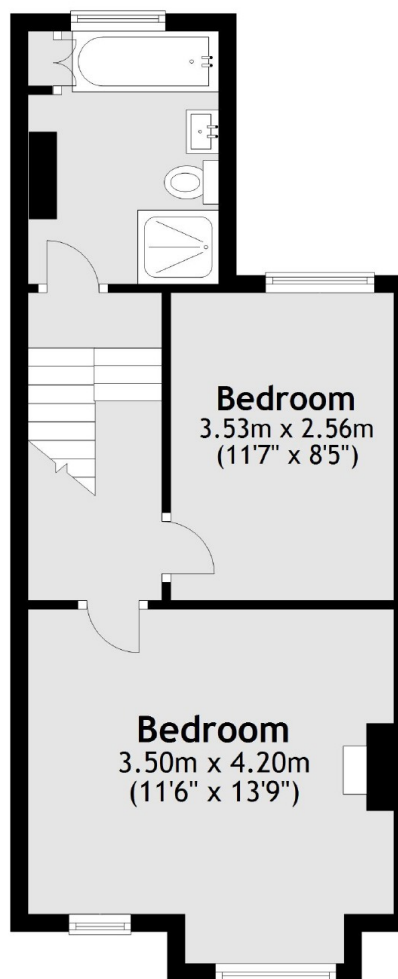


Field Lane, Teddington, TW11

Ground Floor



First Floor



Total area: approx. 80.3 sq. metres (864.4 sq. feet)